

NOTE:

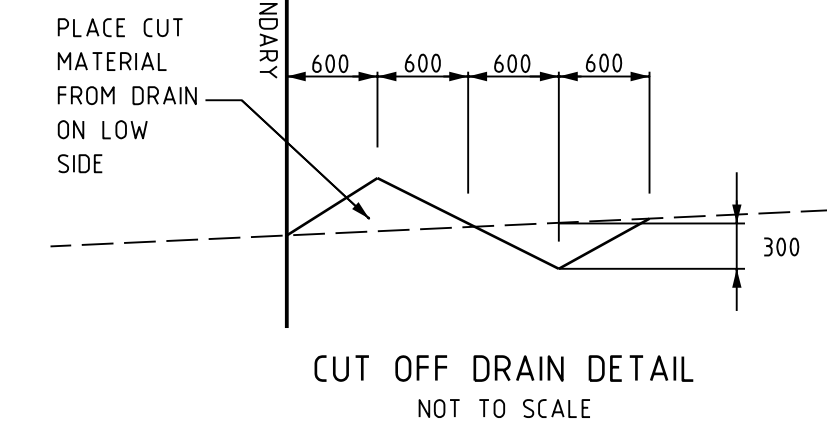
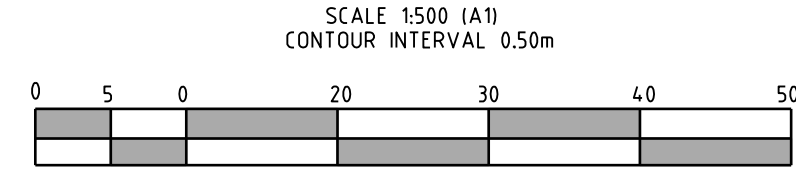
- TRENCHES BEHIND BACK OF KERB AND IN EXCESS OF 1 METRE TO BE BACK FILLED WITH EXISTING MATERIAL PLACED & COMPACTED IN LAYERS OF 300mm (MECHANICAL COMPACTION METHODS ONLY TO BE USED).
- VEHICLE CROSSINGS TO BE CONSTRUCTED FOR LOTS 152, 174 & 177.
- TGSI'S ARE NOT TO BE PLACED OVER JOINTS IN CONCRETE FOOTPATHS.

SERVICE OFFSET TABLE

ROAD	SERVICE	GAS	WATER	TELSTRA	ELECTRICITY	SEWER	STREET TREES
BOOBOOK GROVE		2.10m (S)	2.60m (S)	2.10m (N)	2.60m (N)	1.0m (S)	2.85m
WAGTAIL WAY		2.10m (W)	2.60m (W)	2.50m (E)	3.00m (E)	1.0m (W)	2.85m

NOTE: ALL MEASUREMENTS ARE TO BE TAKEN FROM THE BUILDING LINE TO C OF TRENCH

DETAIL PLAN



AREA TO BE FILLED

INDEX	DATE	REVISION	APPD.
2	18.08.11	FOOTPATH ADDED WEST OF WAGTAIL WAY	R.S.
1	11.08.11	AS CONSTRUCTED	C.A.
E	02.02.11	STREET LIGHTING ADDED	P.S.
D	21.10.10	RELOCATE FOOTPATH @ LOT 181	P.S.
C	03.09.10	AMENDED BOOBOOK GROVE - WAGTAIL WAY INTERSECTION	P.S.
B	03.06.09	COUNCIL AMENDMENTS AS PER CORRESPONDANCE 18 MAY 2009	P.S.

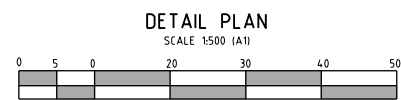
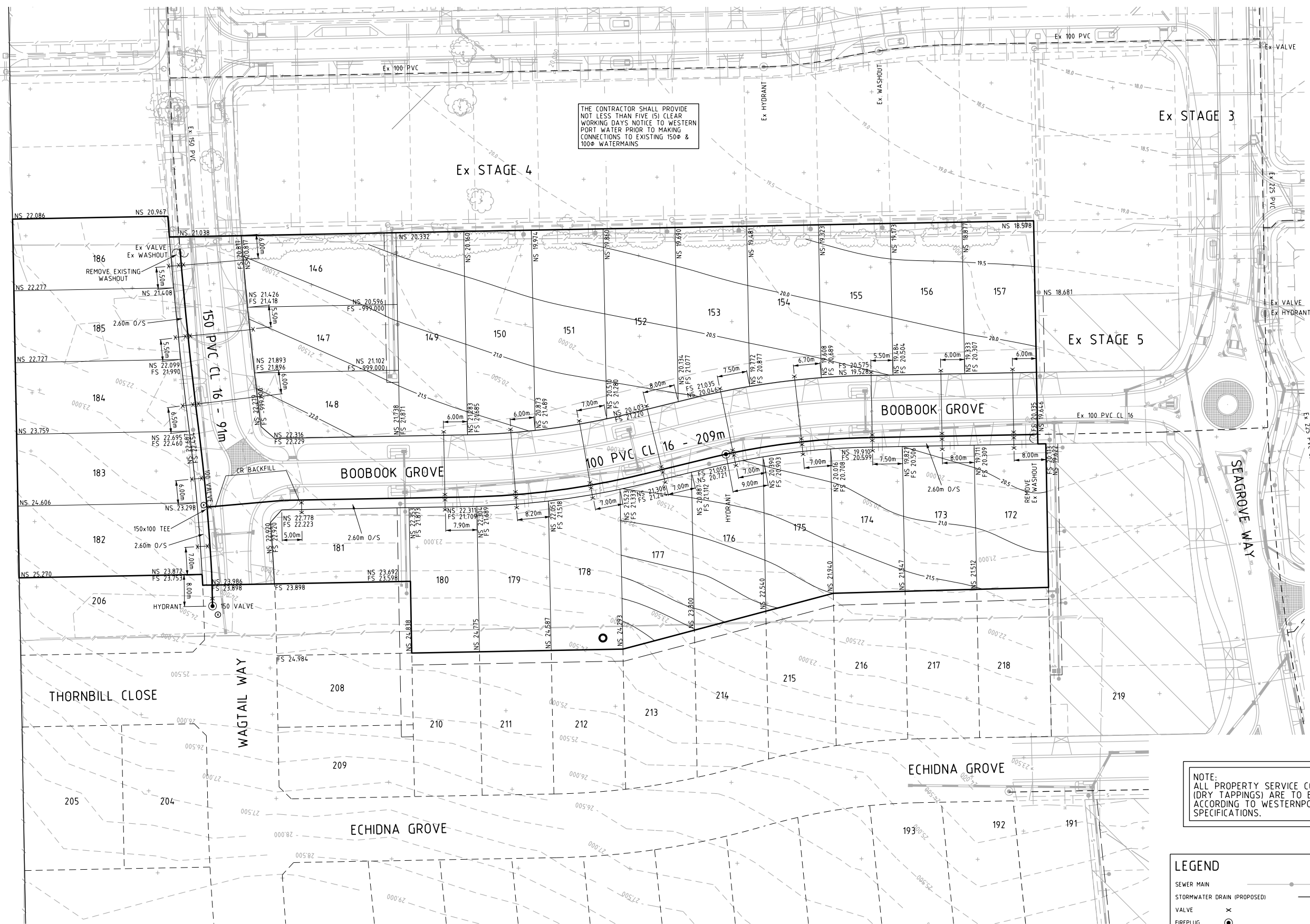
Beveridge Williams
development & environment consultants
Melbourne - Suite 6/115 Hawthorn Road, Caulfield North 3161 Ph (03) 9528 4444
Ballarat - 95 Main Road, Ballarat 3350 Ph (03) 5327 2000
Traralgon - Shop 4, 85 Hotham Street, Traralgon 3844 Ph (03) 5176 0374
Leongatha - 52A Bair Street, Leongatha 3963 Ph (03) 5662 2630
Wonthaggi - 134 Graham Street, Wonthaggi 3995 Ph (03) 5672 1505



SURVEY	B.WILLIAMS & CO	PS631587T
DESIGN	R.HABEL	VicRoads Reference: 534 A 3
DRAWN	L.SUTHERLAND	© COPYRIGHT BEVERIDGE WILLIAMS & CO. P/L HAS GRANTED A LICENSE TO THE PRINCIPAL TO USE THIS DOCUMENT FOR ITS INTENDED PURPOSE AND UNAUTHORISED COPYING IS FORBIDDEN.
CHECKED	L.HADDON	


MUNICIPALITY:	BASS COAST SHIRE COUNCIL
SCHEME:	SEAGROVE ESTATE STAGE 6, COWES
PRINCIPAL:	SOUTHERN SUSTAINABLE DEVELOPMENTS PTY. LTD.

BEV WILL REF: E4015 /STAGE 6	REV	1
B.C.S.C. CONSTRUCTION DRAWING NUMBER:	2059 / 3	
Sheet	3 of 12	



LEGEND	
SEWER MAIN	—●—
STORMWATER DRAIN (PROPOSED)	- - -
VALVE	×
FIREPLUG	⊙
TAPER	▲
TAPPING UNDER PRESSURE - T.U.P.	⊙
THRUST RESTRAINT	⊙


Revision	Details	Date	App'd
C	WESTERNPORT WATER DWG No. ADDED	23/12/10	PS
B	STAGE 4 AS CONSTRUCTED INFO ADDED	2/9/10	PS
A	ORIGINAL ISSUE	16/3/09	PS



BEVERIDGE
WILLIAMS & CO.
ENGINEERS
PLANNERS
CONSULTANTS
PO BOX 7095 CAULFIELD
JUNCTION VIC 3104

WESTERNPORT WATER

Trading name for:
WESTERNPORT REGION WATER AUTHORITY
2 Boys Home Road Newhaven 3925
Phone (03) 5952 2393 Fax (03) 5952 3115



Drawn	C. KIRKCALDY
Designed	P. SMITH
Checked	L. HADDON
Date	March 2009
Scale	As Shown

WESTERNPORT WATER

SEAGROVE ESTATE STAGE 6, COWES

WATERMAIN DETAIL PLAN

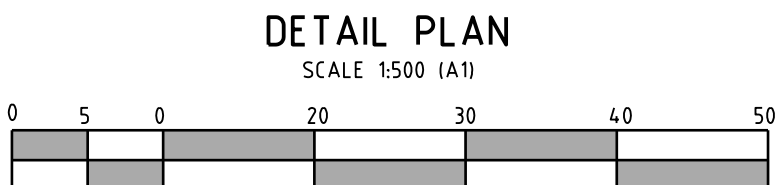
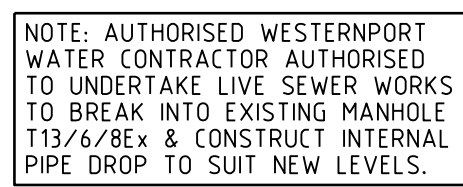
DRG. NO.

W379

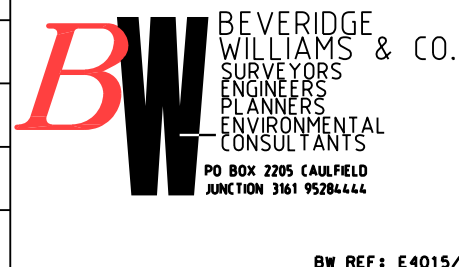
2

sheet 2 of 2

A1



Revision	Details	Date	App'd
D	2A CONNECTIONS CHANGED TO 4A	15/03/11	PS
C	WESTERPORT WATER DRAWING No. ADDED	23/12/10	PS
B	STAGE 4 AS CONSTRUCTED INFO ADDED	2/9/10	PS
A	ORIGINAL ISSUE	16/3/09	PS



WESTERNPORT WATER

Trading name for:
WESTERNPORT REGION WATER AUTHORITY
2 Boys Home Road Newhaven 3925
Phone (03) 5952 2393 Fax (03) 5952 3115

The logo is a circular emblem. The top half of the circle contains the word "WESTERNPORT" in a serif font. The bottom half contains a stylized illustration of a sailboat on the water, with a small anchor below it. The entire logo is rendered in a dark, possibly black or dark blue, color.


Drawn	C. KIRKCALDY
Designed	P. SMITH
Checked	L. HADDON
Date	March 2008
Scale	As Shown


WESTERNPORT WATER
SEAGROVE ESTATE STAGE 6, COWES
SEWER DETAIL PLAN


DRG. NO.
S569
2


A1


LEGEND


 PROPOSED TREES & SHRUBS


 TERRESTRIAL PLANTING 1 (SHREDDED EUCAMULCH)

 EPHEMERAL RAINGARDEN PLANTING (TUSCAN SCREENINGS GRAVEL MULCH)

 GRASS (SEEDED)

 DRAINAGE

 STAGE 5 BOUNDARY

 TIMBER EDGE

- GENERAL NOTES
1. Refer to Landscape Specification by Beveridge Williams.

2. The Landscape Contractor must refer to civil engineering drawings for set out of roads and carpark and all infrastructure.

3. This plan is intended for soft landscaping and associated landscape materials and must not be used for any other purposes.

4. All survey information supplied is assumed to be correct.

5. The Landscape Contractor must verify all dimensions and areas prior to commencing any work or placing any orders for materials.

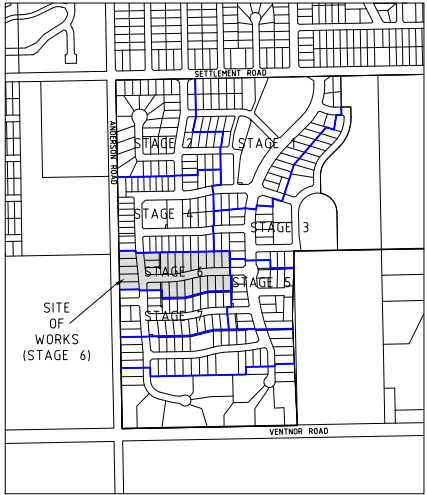
6. The Landscape Contractor must determine the location of all underground services prior to commencing any work on site and shall be liable for any damage to services or conduits.

7. The Landscape Contractor must immediately report any perceived errors or omissions in the landscape drawings to the Project Manager and Client.

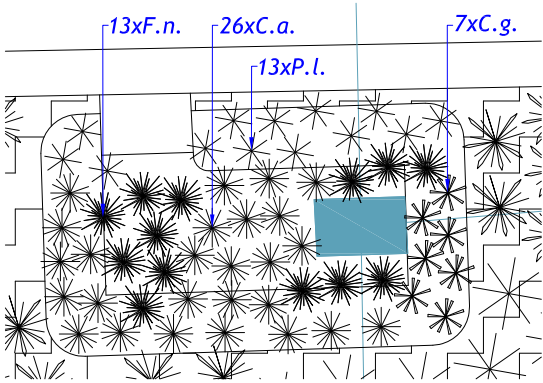
8. Where any conflict occurs between proposed tree locations and infrastructure, such as light poles or powerlines, tree(s) must be relocated or removed.

9. The Landscape Contractor must confirm all plant quantities prior to ordering.

10. Grassed nature strips to Civil details.



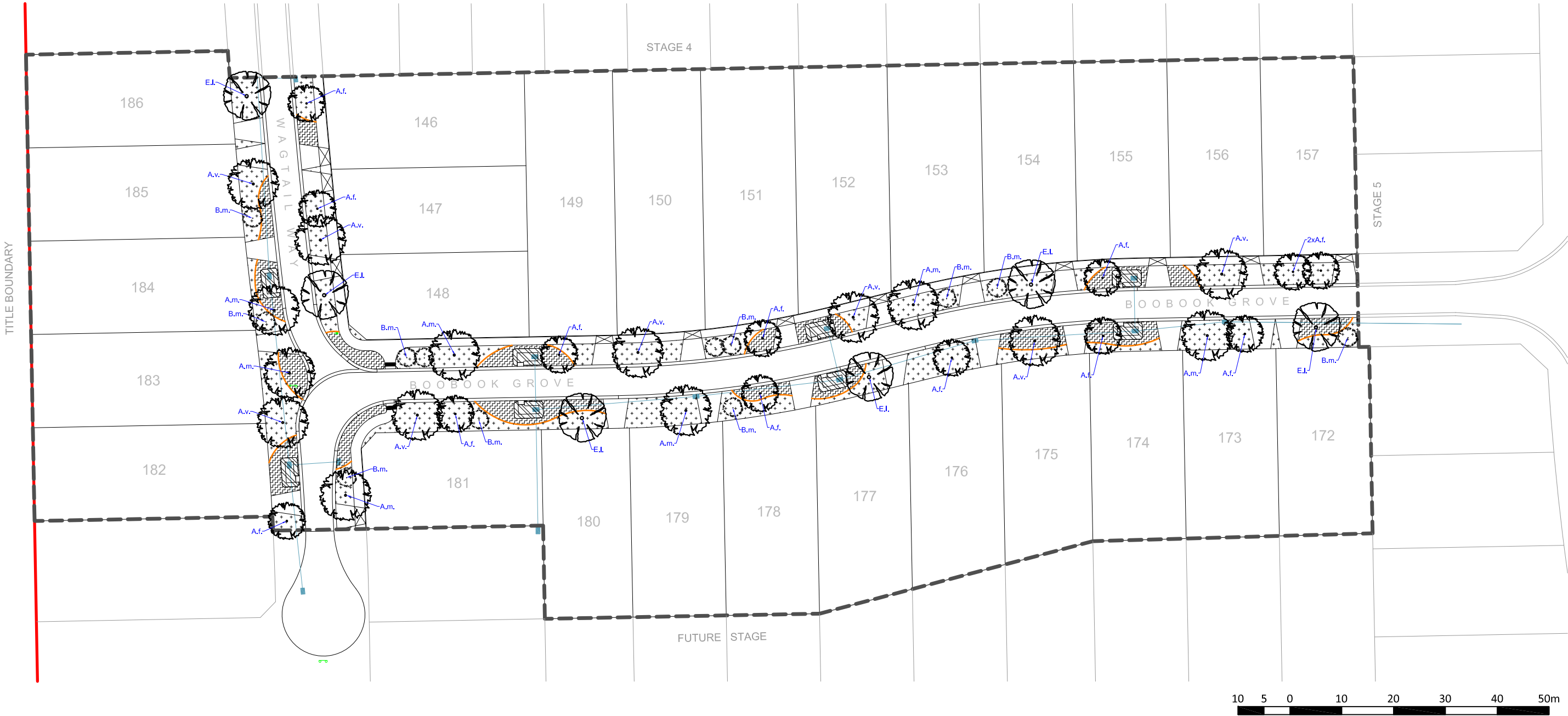
KEY PLAN (NOT TO SCALE)



TYPICAL RAINGARDEN PLANTING DETAIL
SCALE 1:10 (A3)

PLANT SCHEDULE						
CODE	BOTANICAL NAME	COMMON NAME	HEIGHT X WIDTH	% MIX & DENSITY	POT SIZE	QTY
Street Trees						
A.f.	Agonis flexuosa	Willow Myrtle	7-9x4-5m	-	400mm	13
A.m.	Acacia melanoxylon	Blackwood	12-16x5-7m	-	45L	7
A.v.	Allocasuarina verticillata	Drooping Sheoke	5-8x4-7m	-	45L	8
B.m.	Banksia marginata	Silver Banksia	2x1.8m	-	400mm	12
E.l.	Eucalyptus leucoxylon 'Eukie Dwarf'	Dwarf Yellow Gum	9-10x7-9m	-	400mm	6
Terrestrial Planting 1(Street planting) - Tussocks & groundcovers (total area 670m²)						
D.r.	Dianella revoluta var brevicaulis	Black-anther Flax Lily	0.8x0.8m	20% @ 1/m²	Tube	93
F.n.	Ficinia nodosa	Knobby Club-Rush	1x0.8m	10% @ 1/m²	Tube	56
L.g.	Lepidosperma gladiatum	Coast Sword Sedge	1x1.5m	10% @ 1/m²	Tube	52
L.l.	Lomandra longifolia	Spiny Headed Mat Rush	1x1.2m	20% @ 1/m²	Tube	77
P.a.	Patersonia occidentalis	Purple Flag	0.3x0.5m	10% @ 1/m²	Tube	120
P.l.	Poa labillardieri	Common Tussock Grass	1x1m	20% @ 1/m²	Tube	105
S.g.	Stylidium graminifolium	Grass Trigger Plant	0.3x0.3m	10% @ 1/m²	Tube	144
Ephemeral Raingarden (total 85m²)						
C.a.	Carex appressa	Tall Sedge	0.8X0.7m	20% @ 4/m²	Tube	208
C.g.	Carex gaudichaudiana	Fen Sedge	0.8X0.5m	20% @ 4/m²	Tube	56
F.n.	Ficinia nodosa	Nobby Club Rush	1x0.8m	40% @ 4/m²	Tube	104
P.l.	Poa labillardieri	Common Tussock - Grass	0.8X0.8m	10% @ 4/m²	Tube	104

FOR TENDER



© COPYRIGHT
Beveridge Williams & CO Pty Ltd has granted a licence to the principal to use this document for its intended purpose.
No unauthorized copying is permitted.

Rev

Description


Date

By

App.

Client

SOUTHERN SUSTAINABLE DEVELOPMENTS PTY LTD



Project Name

SEAGROVE ESTATE, STAGE-6 COWES

Drawing Title

OVERALL LANDSCAPE PLAN

Designed
Date


N.VINCETTI
23.09.10

Drawn
Date

N.VINCETTI
13.10.10

Sheet

1 of 5

 **Beveridge Williams**
development & environment consultants
Suite 5/116 Hawthorn Road
Caulfield North VIC 3161
ph : 03 9528 4444
www.beveridgewilliams.com.au

Scale

1:800(A3)/1:400(A1)

Project Ref.

A4015-06

Drawing No.

1/5

Rev.

-

Drawing Ref.

K:\JOB8 DATA\A015 - SEAGROVE ESTATE\LAN\A4015-SEAGROVE, COWES\CAD\A015-06 LP 20101013.DWG

