

FOOTPATH SETOUT DETAILS SETTLEMENT ROAD

C-line Road. Chainage	Descr.	C-line Offset	Radius	R.L.
149.81	TP	7.800		12.481
160.08	Q	7.445		12.386
170.36	M	7.325	448.000	12.317
180.64	Q	7.442		12.277
190.91	TP	7.793		12.272
193.17	Q	7.872		12.275
195.43	M	7.899	102.000	12.278
197.69	Q	7.878		12.281
199.94	Q	7.806		12.284
210.24	Q	7.483		12.298
220.54	M	7.397	448.000	12.337
230.83	Q	7.547		12.418
241.12	TP	7.935		12.543
246.59	Q	8.128		12.617
252.063	M	8.173	200.000	12.691
257.53	Q	8.066		12.762
263.00	TP	7.811		12.820
270.00	Q	7.513		12.876
277.00	M	7.461	198.000	12.913
284.00	Q	7.458		12.936
290.99	TP	8.103		12.926

GROSS POLLUTANTS TRAPS
SHOWN THUS



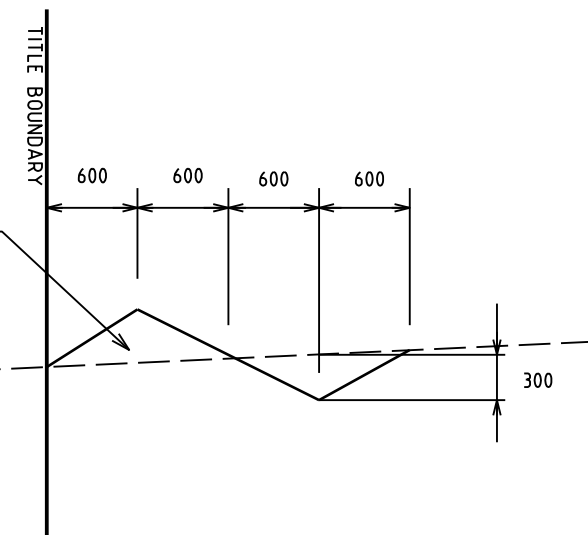
NOTE:
BOLLARDS TO BE INSTALLED
AROUND THE RESERVE.
REFER TO LANDSCAPE PLANS
FOR DETAILS.

NOTE:
PRIOR TO END OF MAINTENANCE PERIOD
THE SEDIMENT POND AND ALL GROSS POLLUTANT
TRAPS SHALL BE CLEANED TO THE SATISFACTION OF
BASS COAST SHIRE COUNCIL,
AS WELL AS ALL DRAINS TO BE FLUSHED

FOOTPATH SETOUT DETAILS SETTLEMENT ROAD

C-line Road. Chainage	Descr.	C-line Offset	Radius	R.L.
2.49	TP	8.482		15.639
7.02	Q	7.731		15.484
11.60	M	7.295	66.500	15.331
16.20	Q	7.177		15.189
20.79	TP	7.377		15.059
23.87	Q	7.570		14.976
26.95	M	7.671	102.000	14.899
30.04	Q	7.679		14.826
33.12	TP	7.593		14.753
44.75	Q	7.244		14.679
56.39	M	7.198	448.000	14.205
68.03	Q	7.454		13.929
79.66	TP	7.456		13.661
82.71	Q	8.152		13.593
85.76	M	8.202	102.000	13.525
88.82	Q	8.159		13.458
91.87	TP	8.026		13.393
103.93	Q	7.477		13.134
115.99	M	7.255	448.000	12.902
128.06	Q	7.358		12.715
140.13	TP	7.786		12.573
142.55	Q	7.875		12.549
144.97	M	7.908	102.000	12.526
147.39	Q	7.882		12.504
149.81	TP	7.800		12.481

PLACE CUT MATERIAL
FROM DRAIN ON LOW
SIDE



CUT OFF DRAIN DETAIL

RAISED CONCRETE ISLAND
SEMI MOUNTABLE WITHIN LINEMARKING.
200mm THICK CONCRETE INFILL
REINFORCED WITH F72 MESH AND
EXPOSED AGGREGATE FINISH.

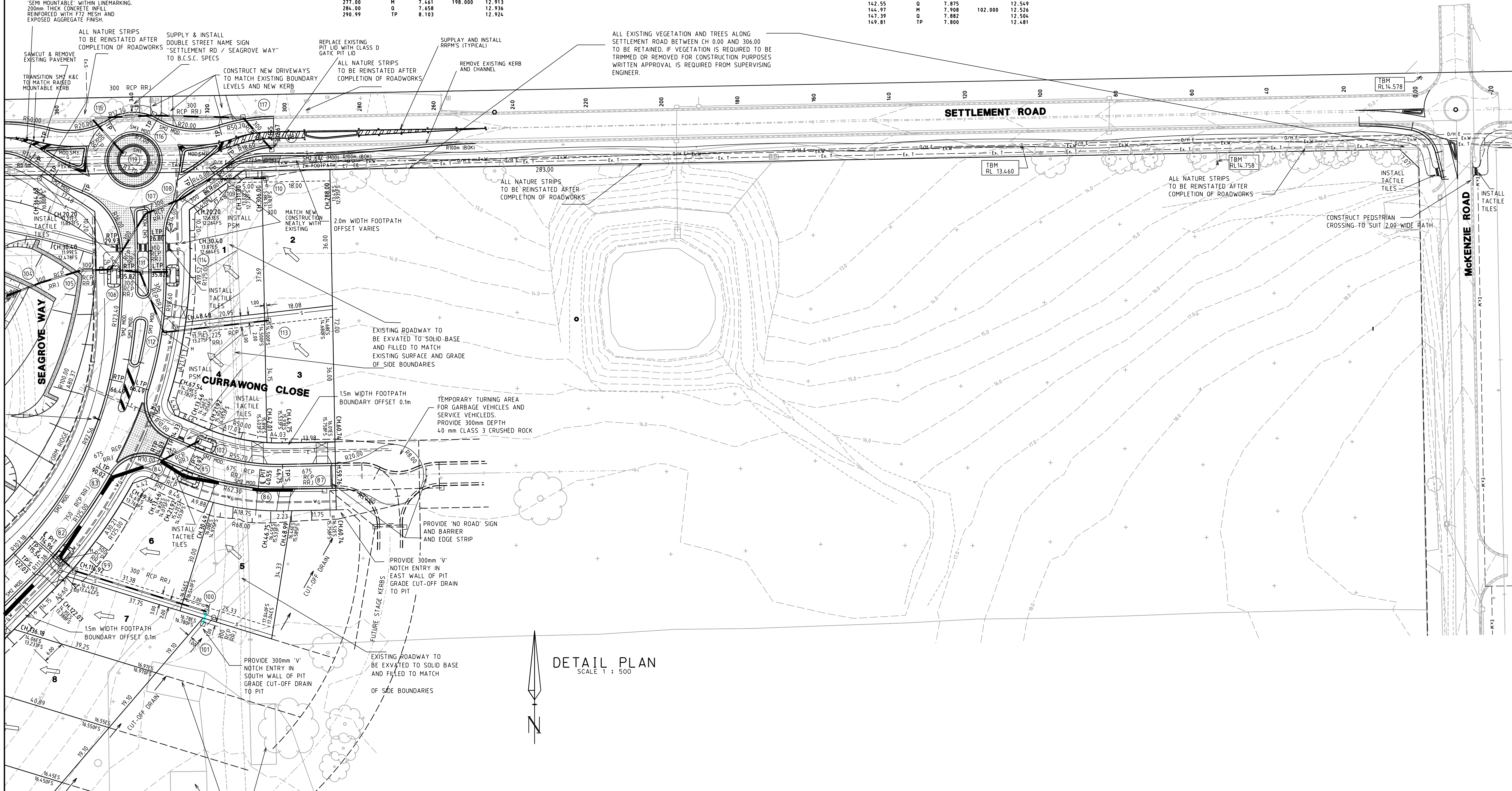
ALL NATURE STRIPS
TO BE REINSTATED AFTER
COMPLETION OF ROADWORKS

SUPPLY & INSTALL
DOUBLE STREET NAME SIGN
SETTLEMENT RD / SEAGROVE WAY
TO B.C.S.C. SPECS

REPLACE EXISTING
PIT LID WITH CLASS D
GATIC PIT LID

SUPPLY AND INSTALL
RRPM'S (TYPICAL)

ALL EXISTING VEGETATION AND TREES ALONG
SETTLEMENT ROAD BETWEEN CH 0.00 AND 306.00
TO BE RETAINED. IF VEGETATION IS REQUIRED TO BE
TRIMMED OR REMOVED FOR CONSTRUCTION PURPOSES
WRITTEN APPROVAL IS REQUIRED FROM SUPERVISING
ENGINEER.



DETAIL PLAN
SCALE 1 : 500

INDEX	DATE	REVISION	APPD.
J	27/01/12	AS CONSTRUCTED	CW
H	27/02/09	AS CONSTRUCTED AMENDMENTS	JO
G	11/05/07	COUNCIL AMENDMENTS	
F	08/03/07	COUNCIL AMENDMENTS	
E	13/01/07	COUNCIL AMENDMENTS	

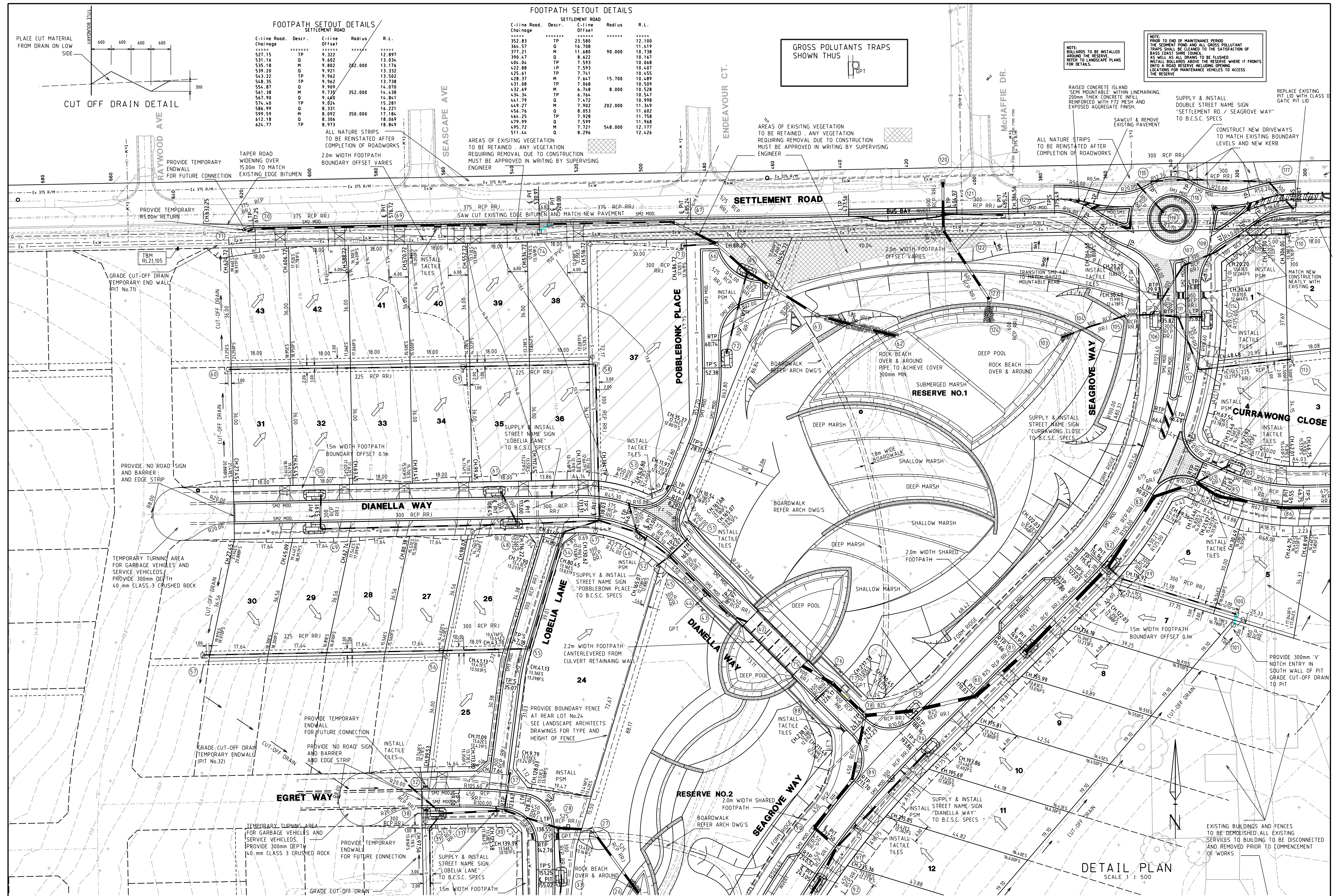
Beveridge Williams
development & environment consultants
Melbourne - 1 Glenferrie Road, Malvern 3144 Ph (03) 9528 4444
Ballarat - 96 Main Road, Ballarat 3350 Ph (03) 5327 2000
Traralgon - Shop 4, 85 Hotham Street, Traralgon 3844 Ph (03) 5176 0374
Leongatha - 52A Bair Street, Leongatha 3953 Ph (03) 5662 2630
Wonthaggi - 134 Graham Street, Wonthaggi 3995 Ph (03) 5672 1505

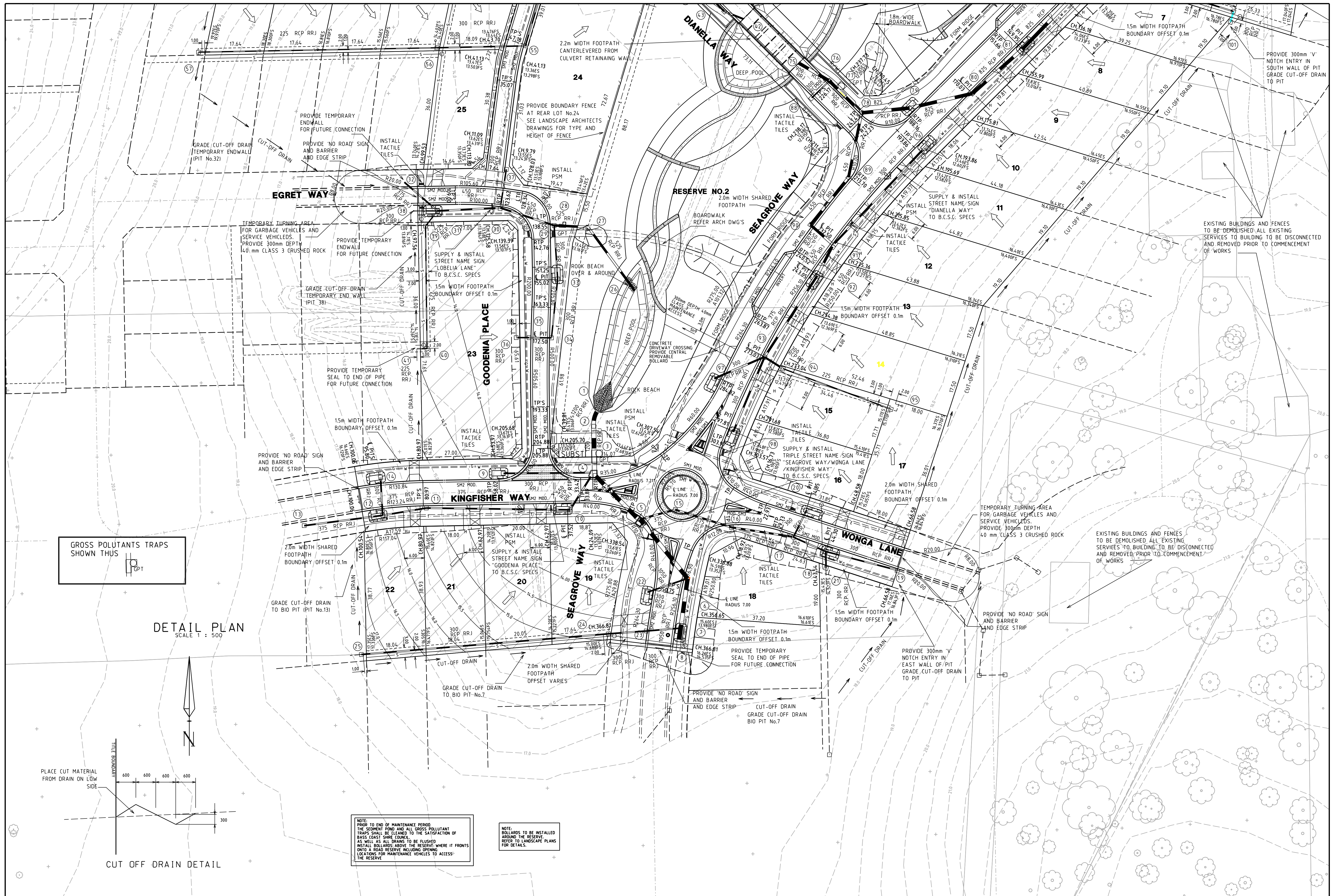


SURVEY	BEV. WILL. PL	PS 534618B
DESIGN	R.KUURMAN	Melways Reference: 631 J2
DRAWN	R.KUURMAN	© COPYRIGHT BEVERIDGE WILLIAMS & CO. PTY. LTD. ALL RIGHTS RESERVED. NO PART OF THIS DOCUMENT IS TO BE REPRODUCED OR TRANSMITTED IN ANY FORM OR BY ANY MEANS, ELECTRONIC OR MECHANICAL, INCLUDING PHOTOCOPYING, RECORDING, OR BY ANY INFORMATION STORAGE AND RETRIEVAL SYSTEM, WITHOUT PERMISSION IN WRITING FROM BEVERIDGE WILLIAMS & CO. PTY. LTD.
CHECKED	D.POWELL	

MUNICIPALITY:	BASS COAST SHIRE COUNCIL	BW REF:40151
SCHEME:	SEAGROVE ESTATE - COWES, PHILLIP ISLAND	
PRINCIPAL:	SOUTHERN SUSTAINABLE DEVELOPMENTS	

Scale: As shown @ A1 size	Drawing No. 1638/ 6	REV J
Sheet 6 of 50		



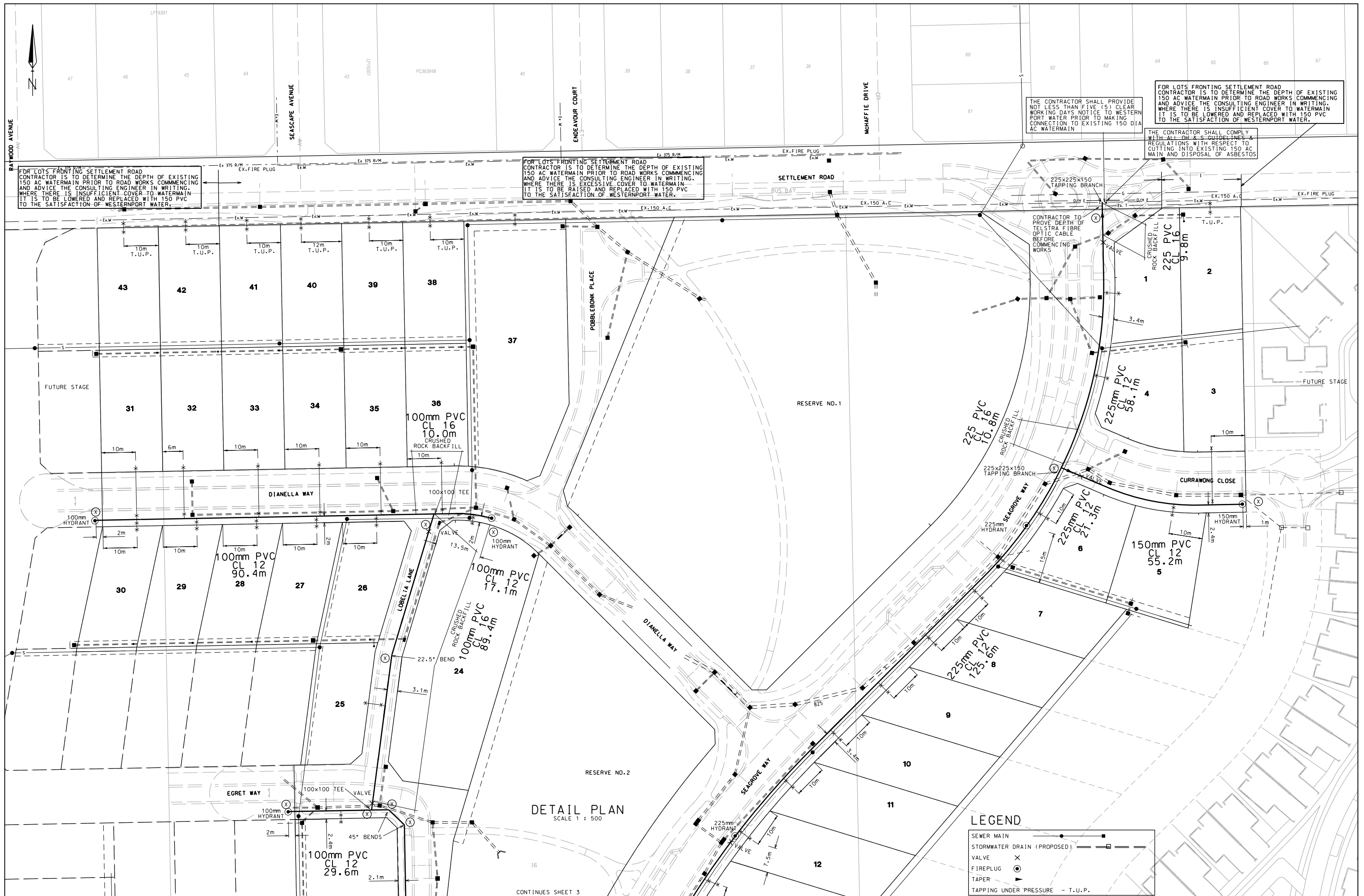



J	270112	AS CONSTRUCTED	CW
H	270209	AS CONSTRUCTED AMENDMENTS	JO
G	110507	COUNCIL AMENDMENTS	
F	80307	COUNCIL AMENDMENTS	
E	130107	COUNCIL AMENDMENTS	
INDEX	DATE	REVISION	APPD.

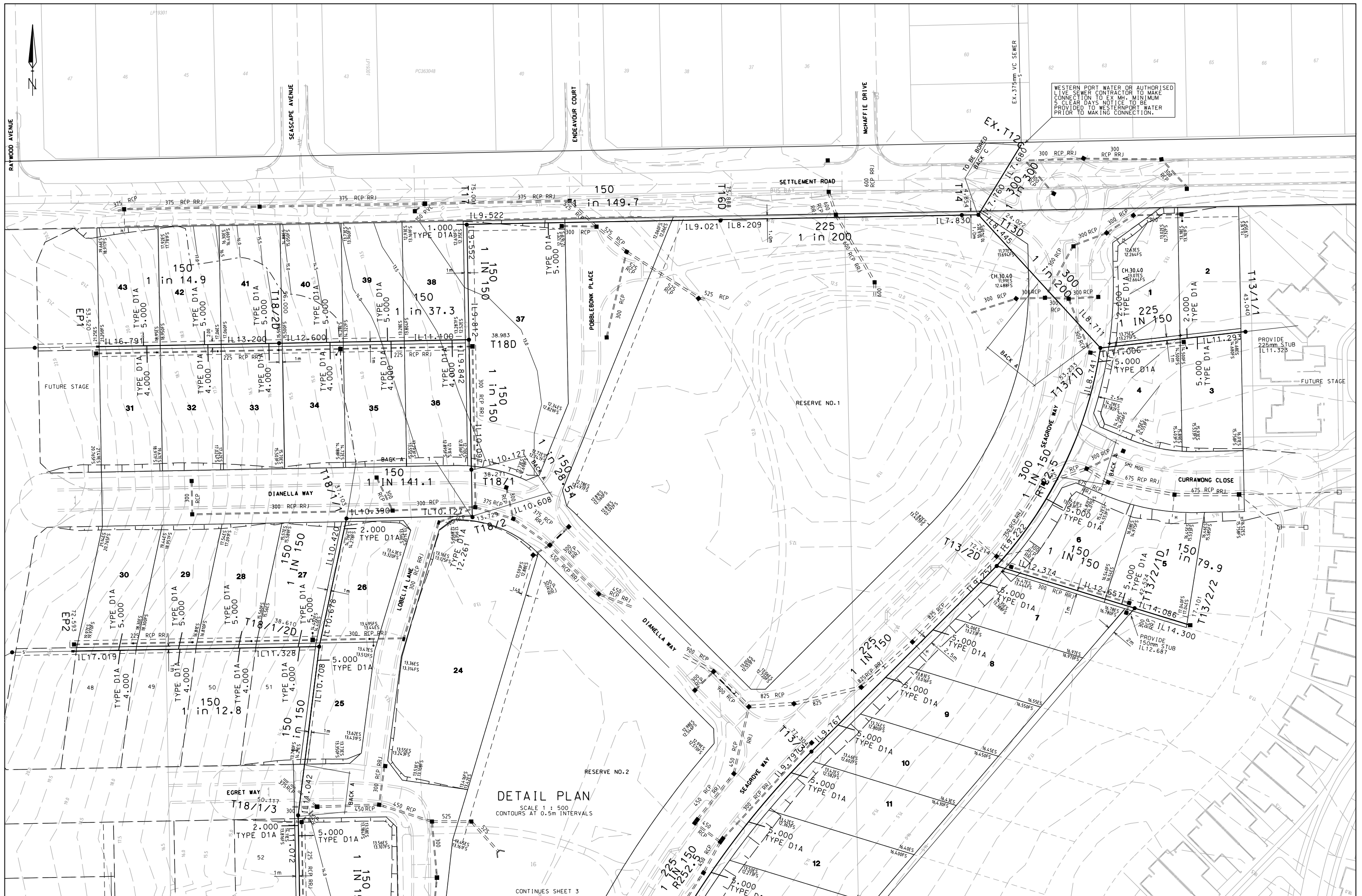
	Beveridge Williams development & environment consultants Melbourne - 1 Glenferrie Road, Malvern 3144 Ph (03) 9528 4444 Ballarat - 96 Main Road, Ballarat 3350 Ph (03) 5327 2000 Traralgon - Shop 4, 85 Hotham Street, Traralgon 3844 Ph (03) 5176 0374 Leongatha - 52A Bair Street, Leongatha 3953 Ph (03) 5662 2630 Wonthaggi - 134 Graham Street, Wonthaggi 3995 Ph (03) 5672 1505	
--	---	--


SURVEY	BEV. WILL. PL	PS 534618B	MUNICIPALITY:	BASS COAST SHIRE COUNCIL
DESIGN	R.KUURMAN	Melways Reference: 631 J2	SCHEME:	SEAGROVE ESTATE - COWES, PHILLIP ISLAND DETAIL PLAN 3 OF 3
DRAWN	R.KUURMAN	© COPYRIGHT BEVERIDGE WILLIAMS & CO. PTY. LTD. HAS GRANTED A LICENSE TO THE PRINCIPAL TO USE THIS DOCUMENT FOR ITS INTENDED PURPOSE AND UNAUTHORISED COPYING IS PERMITTED.	PRINCIPAL:	SOUTHERN SUSTAINABLE DEVELOPMENTS
CHECKED	D.POWELL			

BW REF:40151	Scale: As shown @ A1 size
Drawing No. 1638/8	REV J
Sheet 8 of 50	



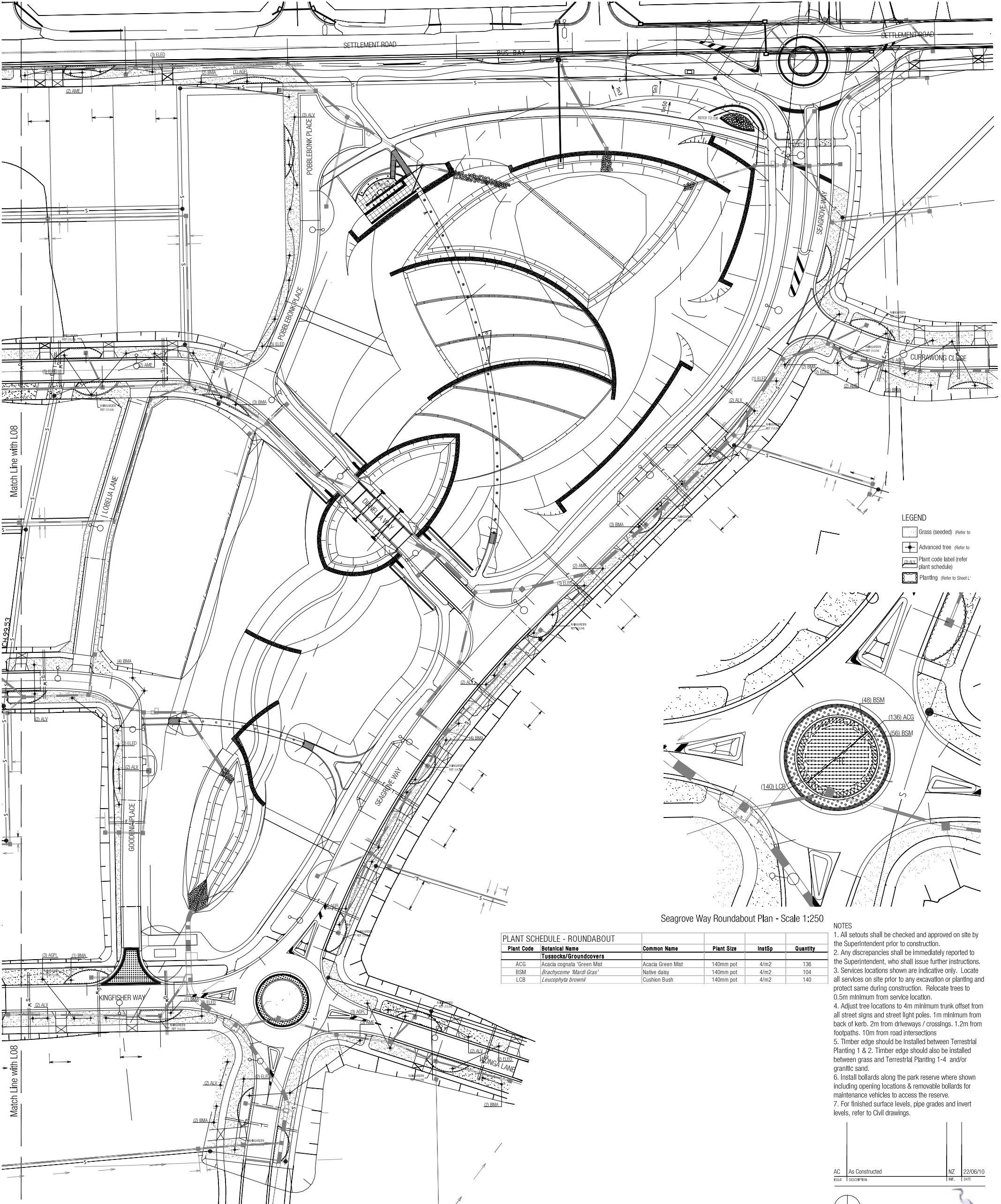
Revision	Details	Date	App'd	<div><div><div><div>BW</div><div>BEVERIDGE WILLIAMS & CO.</div><div>SURVEYORS ENGINEERS PLANNERS ENVIRONMENTAL CONSULTANTS</div><div>PO BOX 2205 CAULFIELD JUNCTION 3161 95264444</div><div>SW REF: E4015</div></div><div><div>WESTERNPORT WATER</div><div>Trading name for: WESTPORT REGION WATER AUTHORITY 2 Boys Home Road Newhaven 3925 Phone (03) 5952 2393 Fax (03) 5952 3115</div><div></div></div></div></div>	Drawn	F.ABATE	WESTERNPORT WATER SEAGROVE ESTATE STAGE 1, COWES DETAIL PLAN A	DRG. NO. W363 A1 sheet 2 of 3
					Designed	F.ABATE		
					Checked	D.McCANN		
					Date	June 2005		
					Scale	As Shown		



Revision	Details	Date	App'd	<div><div><div><div><div><div></div><div>BW</div></div></div><div><div>BEVERIDGE WILLIAMS & CO.</div><div>SURVEYORS</div><div>ENGINEERS</div><div>PLANNERS</div><div>ENVIRONMENTAL CONSULTANTS</div></div><div><small>PO BOX 2209 CAULFIELD JUNCTION VIC 3161 9526444</small></div><div><small>BW REF: E4015</small></div></div></div><div><div>WESTERNPORT WATER</div><div>Trading name for: WESTPORT REGION WATER AUTHORITY 2 Boys Home Road Newhaven 3925 Phone (03) 5952 2393 Fax (03) 5952 3115</div><div></div></div><div><table><tr><td>Drawn</td><td>F.ABATE</td></tr><tr><td>Designed</td><td>F.ABATE</td></tr><tr><td>Checked</td><td>D.McCANN</td></tr><tr><td>Date</td><td>June 2005</td></tr><tr><td>Scale</td><td>As Shown</td></tr></table></div><div><div>WESTERNPORT WATER</div><div>SEAGROVE ESTATE STAGE 1, COWES</div><div>DETAIL PLAN A</div></div></div>	Drawn	F.ABATE	Designed	F.ABATE	Checked	D.McCANN	Date	June 2005	Scale	As Shown	DRG. NO.	A1
Drawn	F.ABATE															
Designed	F.ABATE															
Checked	D.McCANN															
Date	June 2005															
Scale	As Shown															
	S551															
B	REVISED PER WW LETTER OF 27-07-05	4-08-05	FA													
A	MANHOLE NUMBERS REVISED	11-07-05	FA													
sheet 2 of 8																



Revision	Details	Date	App'd	<div><div><div>BW</div><div>BEVERIDGE WILLIAMS & CO. SURVEYORS ENGINEERS PLANNERS ENVIRONMENTAL CONSULTANTS PO BOX 2209 CALFIELD VIC 3103 JWC/TJN 316 9526444 BW REF: E4015</div></div><div>WESTERNPORT WATER</div></div>	Drawn	F.ABATE	WESTERNPORT WATER SEAGROVE ESTATE STAGE 1, COWES DETAIL PLAN B		DRG. NO. S551 sheet 3 of 8	A1
					Designed	F.ABATE				
					Checked	D.McCANN				
B	REVISED PER WW LETTER OF 27-07-05	4-08-05	FA		Date	June 2005				
A	MANHOLE NUMBERS REVISED	11-07-05	FA		Scale	As Shown				



Seagrove Way Roundabout Plan - Scale 1:250

PLANT SCHEDULE - ROUNDABOUT					
Plant Code	Botanical Name	Common Name	Plant Size	InstSp	Quantity
Tussocks/Groundcovers					
ACG	Acacia cognata "Green Mist"	Acacia Green Mist	140mm pot	4/m2	136
BSM	Brachycome "Mardi Gras"	Native daisy	140mm pot	4/m2	104
LCB	Leucophyta brownii	Cushion Bush	140mm pot	4/m2	140

- NOTES
1. All setbacks shall be checked and approved on site by the Superintendent prior to construction.
 2. Any discrepancies shall be immediately reported to the Superintendent, who shall issue further instructions.
 3. Services locations shown are indicative only. Locate all services on site prior to any excavation or planting and protect same during construction. Relocate trees to 0.5m minimum from service location.
 4. Adjust tree locations to 4m minimum trunk offset from all street signs and street light poles. 1m minimum from back of kerb, 2m from driveways / crossings. 1.2m from footpaths, 10m from road intersections
 5. Timber edge should be installed between Terrestrial Planting 1 & 2. Timber edge should also be installed between grass and Terrestrial Planting 1-4 and/or granitic sand.
 6. Install bollards along the park reserve where shown including opening locations & removable bollards for maintenance vehicles to access the reserve.
 7. For finished surface levels, pipe grades and invert levels, refer to Civil drawings.

PLANT SCHEDULE FOR L07					
Botanical Name	Common Name	% Mix	Density	Plant Size	Quantity
Terrestrial Planting 1					
Tussocks/Groundcovers					
<i>Dianella revoluta</i> var. <i>brevicaulis</i>	Black-anther Flax Lily	20.0%	4/m2	Tube Stock	374
<i>Isoplepis nodosa</i>	Knobby Club - Rush	10.0%	4/m2	Tube Stock	187
<i>Lepidosperma gladiatum</i>	Coast Sword Sedge	10.0%	4/m2	Tube Stock	187
<i>Lomandra longifolia</i>	Spiny Headed Mat Rush	20.0%	4/m2	Tube Stock	374
<i>Paterosnia occidentalis</i>	Purple Flag	10.0%	4/m2	Tube Stock	187
<i>Poa labillardieri</i>	Common Tussock - Grass	20.0%	4/m2	Tube Stock	374
<i>Stylidium graminifolium</i>	Grass Trigger Plant	10.0%	4/m2	Tube Stock	187
Ephemeral Rain garden					
<i>Carex appressa</i>	Tall Sedge	20%	4/m2	Tube Stock	205
<i>Carex gaudichaudiana</i>	Fen Sedge	20%	4/m2	Tube Stock	205
<i>Eleocharis acuta</i>	Common Spike-sedge	10%	4/m2	Tube Stock	102
<i>Juncus amabilis</i>	Hollow Rush	20%	4/m2	Tube Stock	205
<i>Juncus greggiorius</i>	Green Rush	17%	4/m2	Tube Stock	174
<i>Melaleuca ericifolia</i>	Swamp Paperbark	3%	4/m2	140m mm pot	31
<i>Poa labillardieri</i>	Common Tussock - Grass	10.0%	4/m2	Tube Stock	102

Plant Code	Botanical Name	Common Name	Plant Size	Quantity
Tree/Shrub Planting				
Trees				
(AGFL)	<i>Agonis flexuosa</i>	Willow Myrtle	2-2.5m height	14
(AME)	<i>Acacia melanoxylon</i>	Blackwood	1.5-2m height	11
(ALV)	<i>Allocasuarina verticillata</i>	Drooping Sheoke	1.5-2m height	17
(BMA)	<i>Banksia marginata</i>	Silver Banksia	1.5-2m height	24
(ELED)	<i>Eucalyptus leucoxylon</i> 'Eukie Dwarf'	Dwarf Yellow Gum	2-2.5m height	27

AC As Constructed
ISSUE 1 DESCRIPTION

NZ 22/06/10
DATE



MDS Landscape Architects
Level 2, 45 Victoria Avenue
Albert Park, Victoria 3206 Australia
T: (03) 9696 4857
F: (03) 9696 3594
E: mail@mdsgroup.com.au

Southern Sustainable Developments

Seagrove Estate

DRAWING TITLE
Stage 1 & 2 Streetscape Planting Plan
Sheet 1

DATE Dec 2005	SCALE 1:500
FILE PATH JA\Seagrove Estate Masterplan\dwgs\Current	
DRAWN BMA	DRAWN MZ
PROJECT NO. 0244A-L07	REV AC