

ISSUED FOR  
CONSTRUCTION

						DESIGNED			J CLOTTU DATE: 04.07.17		PROJECT NUMBER		4015-13		<div><div><div><div></div><div></div></div><div><div></div><div></div></div></div><div><div></div><div></div></div><div>Beveridge Williams</div><div>development &amp; environment consultants</div><div>134 Graham St Wonthaggi VIC 3996 ph: 03 5672 1505 www.beveridgewilliams.com.au</div><div>BEVERIDGE WILLIAMS REFERENCE: 4015-13-710-WDET</div></div>			<div><div><div><div></div><div></div></div><div><div></div><div></div></div></div><div><div></div><div></div></div><div>WESTERNPORT</div><div>WATER</div></div>			SCALE: AS SHOWN		
			DRAWN			J CLOTTU DATE: 04.07.17		MELWAY REFERENCE		731 J2		SHEET 02 OF 02											
A			ISSUED FOR CONSTRUCTION			24.10.17			M COYNE			DRAWING No.: 4015-13-W 02											
REV	DESCRIPTION				DATE	APPROVED	REV	DESCRIPTION				DATE	APPROVED	CHECKED	M COYNE DATE: 04.07.17	AUTHORISED	M COYNE						
</																							

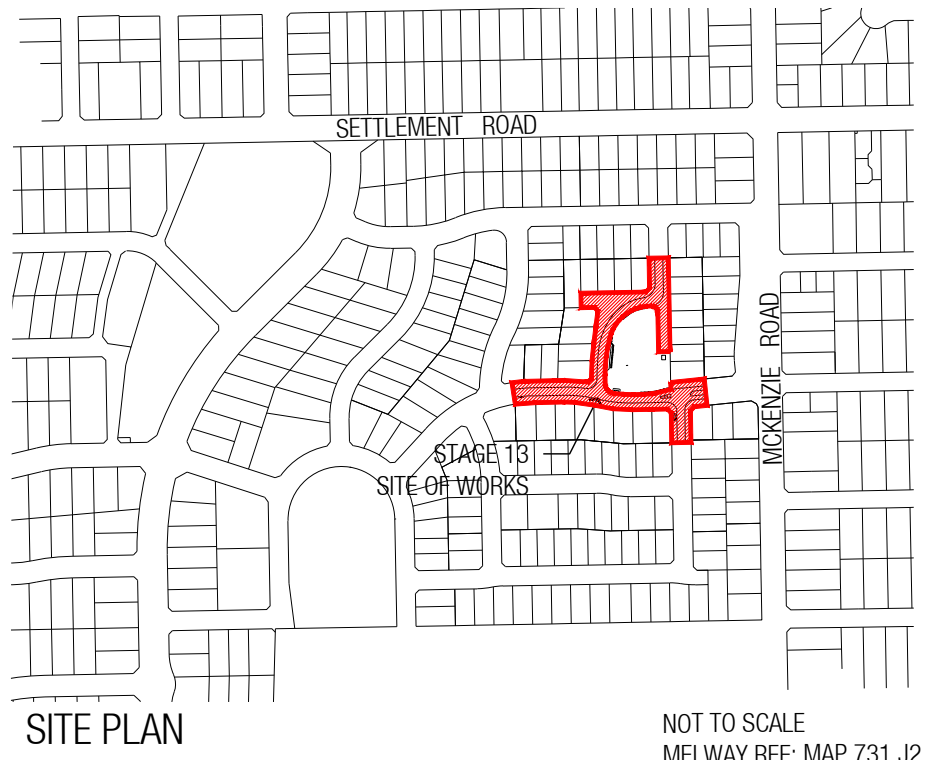
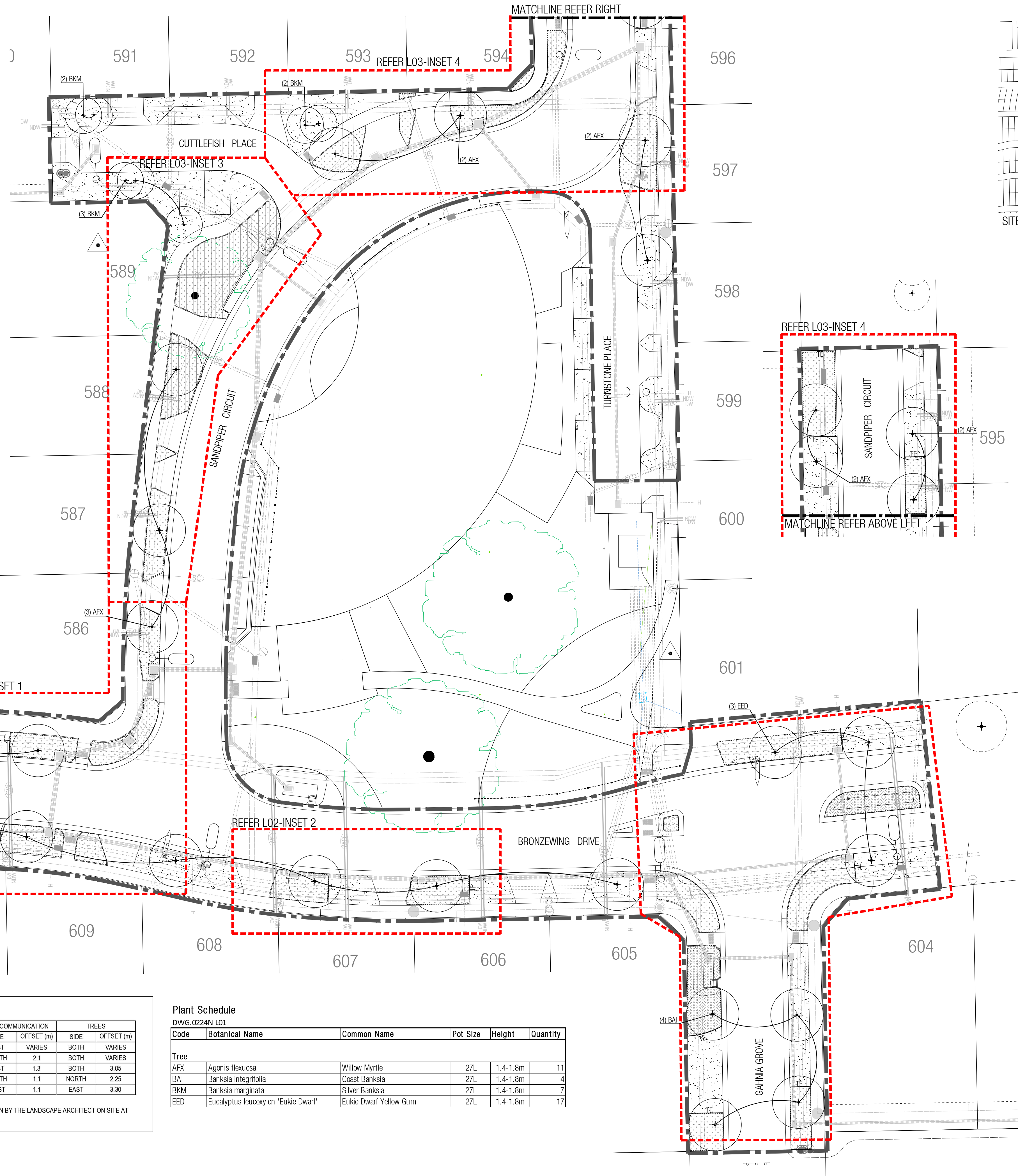


## LEGEND

	EXTENT OF WORK
	EXISTING TREE TO BE MAINTAINED AND PROTECTED
	PROPOSED TREE
	STAGE 12 TREE FOR REFERENCE (NOT PART OF THIS CONTRACT)
	*GARDEN BED WITH ORGANIC MULCH TYPE 1 (AS SPECIFIED)
	GARDEN BED WITH ORGANIC MULCH TYPE 2 (AS SPECIFIED)
	GARDEN BED WITH INORGANIC MULCH (AS SPECIFIED)
	TGSI (BY OTHERS)
	PRE-GROWN TURF (AS SPECIFIED)
	TIMBER EDGE (AS DETAILED & SPECIFIED)
	**EXISTING SERVICES
	LIGHT POLE

\*Refer L02-L04 for detailed planting plan.

\*\*Note: All underground services may not be shown. Refer to service offset and locations table and kerb markings before excavation commences.

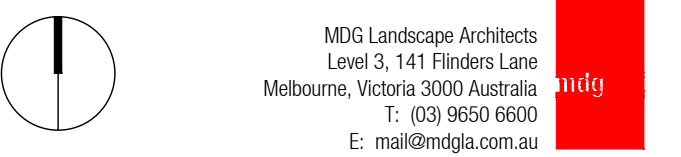


- SERVICES NOTE:
- THE LOCATION OF UNDERGROUND SERVICES SHOWN ON THIS DRAWING ARE APPROXIMATE ONLY. ACTUAL SITE CONDITIONS MAY VARY.
  - THE EXACT POSITIONS OF SERVICES SHOULD BE ESTABLISHED ON SITE PRIOR TO ANY WORKS COMMENCING.
  - NO GUARANTEE CAN BE GIVEN THAT ALL EXISTING SERVICES ARE SHOWN ON THIS PLAN. CONTRACTOR SHOULD REFER TO ENGINEERING DRAWINGS AND/OR CONTACT RELEVANT AUTHORITIES FOR MORE DETAILED INFORMATION REGARDING EXACT SERVICE LOCATION AND BOUNDARY OFFSETS.



- GENERAL NOTES:
- ALL SETOUTS SHALL BE CHECKED AND APPROVED ON SITE BY THE SUPERINTENDENT PRIOR TO CONSTRUCTION.
  - ANY DISCREPANCIES SHALL BE IMMEDIATELY REPORTED TO THE SUPERINTENDENT, WHO SHALL ISSUE FURTHER INSTRUCTIONS.
  - DO NOT SCALE DRAWINGS. FIGURED DIMENSIONS SHALL HAVE PRECEDENCE OVER SCALED DIMENSIONS.
  - ALL SHOP DRAWINGS SHALL BE SUBMITTED TO THE SUPERINTENDENT FOR APPROVAL PRIOR TO FABRICATION.
  - MATERIAL CODES SHALL HAVE PRECEDENCE OVER HATCHES WHERE CODES ARE NOT SHOWN, REFER TO HATCH TYPE. WHERE DISCREPANCIES OR OMITTED DATA OCCUR, REFER TO SUPERINTENDENT FOR DIRECTION.
  - ALL FABRICATED ITEMS SHALL BE INSPECTED AND APPROVED BY THE SUPERINTENDENT PRIOR TO INSTALLATION.
  - THE CONTRACTOR SHALL LOCATE ALL SUBSURFACE SERVICES ETC. PRIOR TO EXCAVATION AND PROTECT SAME DURING CONSTRUCTION.
  - SERVICES LOCATION SHOWN ARE INDICATIVE ONLY. LOCATE ALL SERVICES ON SITE PRIOR TO PLATING AND RELOCATE TREES TO 0.50M MIN. FROM SERVICES TO SUPERINTENDENT'S APPROVAL.
  - TREE LOCATIONS ARE TO BE CONFIRMED ON SITE BY COUNCIL PRIOR TO EXCAVATION AND INSTALLATION.

D	ISSUE FOR COUNCIL APPROVAL	BK	29.03.18
C	ISSUE FOR COUNCIL APPROVAL	BK	22.03.18
B	ISSUE FOR CLIENT APPROVAL	BK	15.03.18
A	PRELIMINARY	BK	07.03.18
REV.	DESCRIPTION	INT.	DATE



SEAGROVE

STAGE 13

DRAWING TITLE  
STAGE 13 STREETScape  
TREE PLANTING PLAN

DATE	SCALE
January 2018	1 : 250 @ A1
FILE PATH	
J:\Seagrove\6. Documentation\0244N Blue Tongue Common Park D06 Docs	
CHECKED	DRAWN
BM	BK
DRAWING NO.	REVISION
1347H L01	D

SERVICES OFFSET TABLE

ROAD NAME	GAS		WATER		RECYCLED WATER		ELECTRICITY		TELECOMMUNICATION		TREES	
	SIDE	OFFSET (m)	SIDE	OFFSET (m)	SIDE	OFFSET (m)	SIDE	OFFSET (m)	SIDE	OFFSET (m)	SIDE	OFFSET (m)
SANDPIPER CIRCUIT	WEST	VARIABLES	WEST	VARIABLES	WEST	VARIABLES	EAST	VARIABLES	EAST	VARIABLES	BOTH	VARIABLES
BRONZEWING DRIVE	NORTH	0.8	NORTH	1.4	NORTH	2	SOUTH	2.7	SOUTH	2.1	BOTH	VARIABLES
GAHNA GROVE	WEST	2.1	WEST	2.4	WEST	2.9	EAST	1.8	EAST	1.3	BOTH	3.05
CUTTLEFISH PLACE	NORTH	1.1	NORTH	1.7	NORTH	2.3	SOUTH	1.7	SOUTH	1.1	NORTH	2.25
TURNSTONE PLACE	EAST	1.7	EAST	2.1	EAST	2.5	WEST	1.7	WEST	1.1	EAST	3.30

NOTE: - TREE PLANTING IS GENERALLY 1m (APPROX) OFFSET FROM BOK IN ROAD RESERVES, BUT ALL LOCATIONS ARE SUBJECT TO CONFIRMATION BY THE LANDSCAPE ARCHITECT ON SITE AT THE TIME OF PLANTING

## Plant Schedule

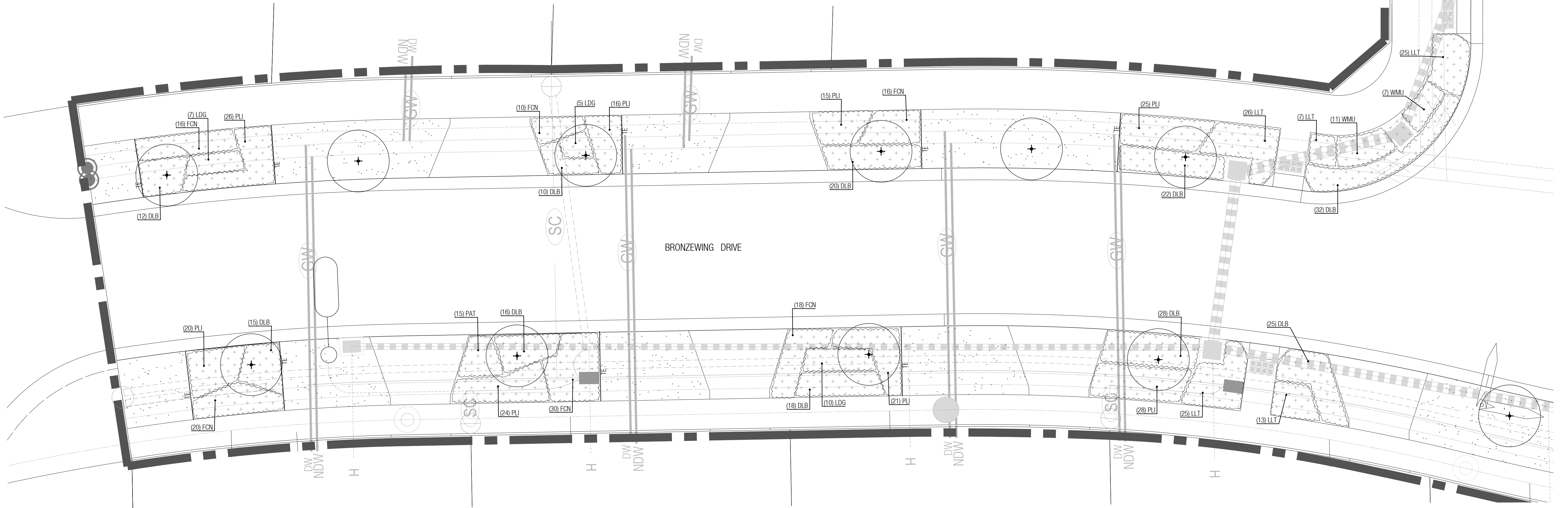
DWG.0224N L01

Code	Botanical Name	Common Name	Pot Size	Height	Quantity
Tree					
AFX	Agonis flexuosa	Willow Myrtle	27L	1.4-1.8m	11
BAI	Banksia integrifolia	Coast Banksia	27L	1.4-1.8m	4
BKM	Banksia marginata	Silver Banksia	27L	1.4-1.8m	7
EED	Eucalyptus leucocylon "Eukie Dwarf"	Eukie Dwarf Yellow Gum	27L	1.4-1.8m	17



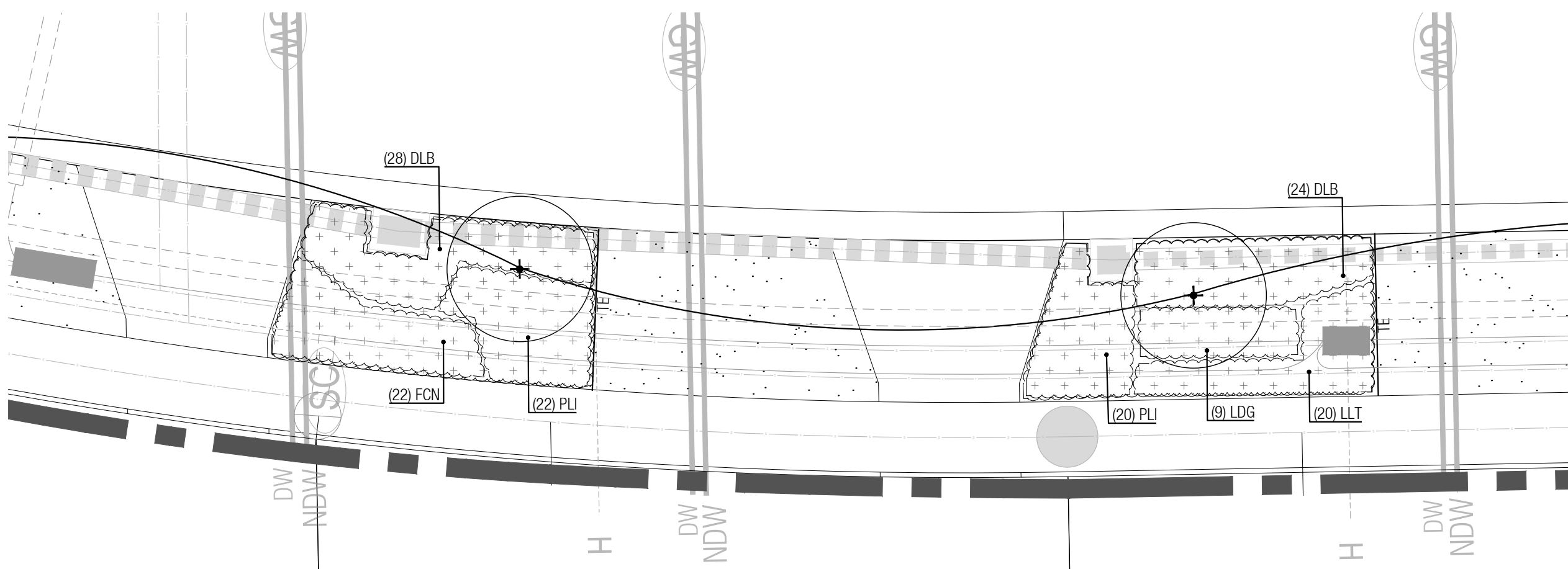


KEY PLAN



1 INSET 1

1:100



2 INSET 2

1:100

## LEGEND

- EXTENT OF WORK
- EXISTING TREE TO BE MAINTAINED AND PROTECTED
- \*PROPOSED TREE
- GARDEN BED WITH ORGANIC MULCH TYPE 1 (AS SPECIFIED)
- TGSI (BY OTHERS)
- PRE-GROWN TURF (AS SPECIFIED)
- TIMBER EDGE (AS DETAILED & SPECIFIED)
- \*\*EXISTING SERVICES
- LIGHT POLE

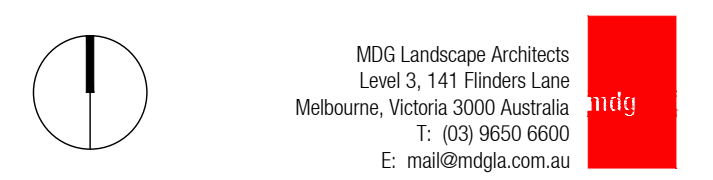
\* Refer L01  
\*\*Refer L04 for Planting Schedule  
\*\*\*Note: All underground services may not be shown. Refer to service offset and locations table (L01) and kerb markings before excavation commences.

- SERVICES NOTE:
- THE LOCATION OF UNDERGROUND SERVICES SHOWN ON THIS DRAWING ARE APPROXIMATE ONLY. ACTUAL SITE CONDITIONS MAY VARY.
  - THE EXACT POSITIONS OF SERVICES SHOULD BE ESTABLISHED ON SITE PRIOR TO ANY WORKS COMMENCING.
  - NO GUARANTEE CAN BE GIVEN THAT ALL EXISTING SERVICES ARE SHOWN ON THIS PLAN. CONTRACTOR SHOULD REFER TO ENGINEERING DRAWINGS AND/ OR CONTACT RELEVANT AUTHORITIES FOR MORE DETAILED INFORMATION REGARDING EXACT SERVICE LOCATION AND BOUNDARY OFFSETS.



- GENERAL NOTES:
- ALL SETOUTS SHALL BE CHECKED AND APPROVED ON SITE BY THE SUPERINTENDENT PRIOR TO CONSTRUCTION.
  - ANY DISCREPANCIES SHALL BE IMMEDIATELY REPORTED TO THE SUPERINTENDENT, WHO SHALL ISSUE FURTHER INSTRUCTIONS.
  - DO NOT SCALE DRAWINGS. FIGURED DIMENSIONS SHALL HAVE PRECEDENCE OVER SCALED DIMENSIONS.
  - ALL SHOP DRAWINGS SHALL BE SUBMITTED TO THE SUPERINTENDENT FOR APPROVAL PRIOR TO FABRICATION.
  - MATERIAL CODES SHALL HAVE PRECEDENCE OVER HATCHES WHERE CODES ARE NOT SHOWN, REFER TO HATCH TYPE. WHERE DISCREPANCIES OR OMITTED DATA OCCUR, REFER TO SUPERINTENDENT FOR DIRECTION.
  - ALL FABRICATED ITEMS SHALL BE INSPECTED AND APPROVED BY THE SUPERINTENDENT PRIOR TO INSTALLATION.
  - THE CONTRACTOR SHALL LOCATE ALL SUBSURFACE SERVICES ETC. PRIOR TO EXCAVATION AND PROTECT SAME DURING CONSTRUCTION.
  - SERVICES LOCATION SHOWN ARE INDICATIVE ONLY. LOCATE ALL SERVICES ON SITE PRIOR TO PLATING AND RELOCATE TREES TO 0.50M MIN. FROM SERVICES TO SUPERINTENDENTS APPROVAL.
  - TREE LOCATIONS ARE TO BE CONFIRMED ON SITE BY COUNCIL PRIOR TO EXCAVATION AND INSTALLATION.

D	ISSUE FOR COUNCIL APPROVAL	BK	29.03.18
C	ISSUE FOR COUNCIL APPROVAL	BK	22.03.18
B	ISSUE FOR CLIENT APPROVAL	BK	15.03.18
A	PRELIMINARY	BK	07.03.18
REV.	DESCRIPTION	INT.	DATE



## SEAGROVE STAGE 13

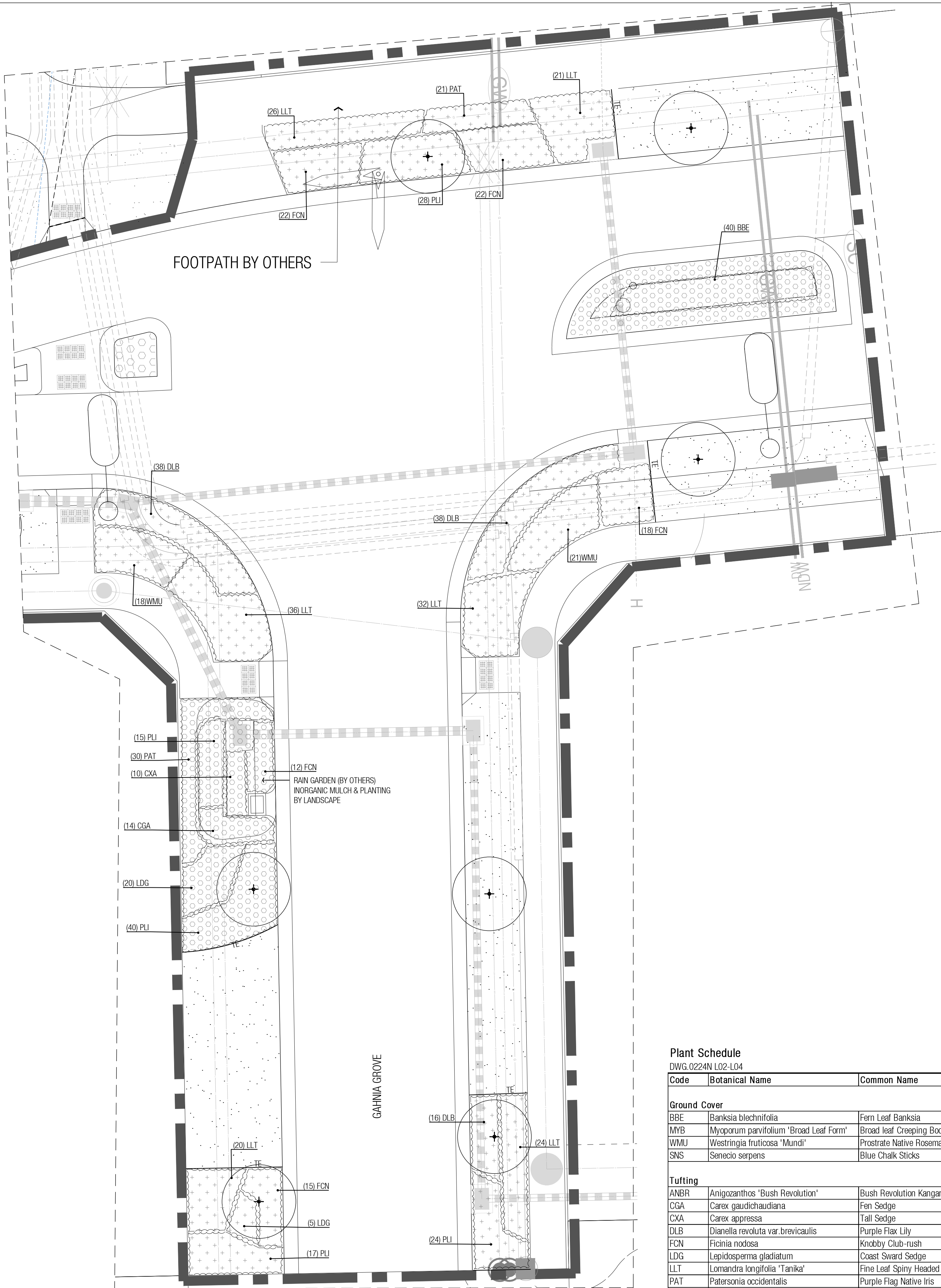
DRAWING TITLE	STAGE 13 STREETSCAPE DETAILED PLANTING PLAN 1 OF 3
DATE	January 2018
SCALE	1:100 @ A1
FILE PATH	J:\Seagrove\6. Documentation\0244N Blue Tongue Common Park D&D Docs
CHECKED	BM
DRAWN	BK
DRAWING NO.	1347H L02
REVISION	D





DATE	SCALE
January 2018	1 : 100 @ A1
FILE PATH	
J:\Seagrove\6. Documentation\0244N Blue Tongue Common Park DD& Docs	
CHECKED	DRAWN
BM	BK
DRAWING NO.	REVISION
1347H L03	D





1 INSET 45

1:100

FINISHES SETOUT  
LEGEND

- EXTENT OF WORK
- EXISTING TREE TO BE MAINTAINED AND PROTECTED
- PROPOSED TREE
- GARDEN BED WITH ORGANIC MULCH TYPE 1 (AS SPECIFIED)
- GARDEN BED WITH INORGANIC MULCH (AS SPECIFIED)
- TGS (BY OTHERS)
- PRE-GROWN TURF (AS SPECIFIED)
- TIMBER EDGE (AS DETAILED & SPECIFIED)
- \*EXISTING SERVICES
- LIGHT POLE

\* Refer L01  
\*\* Refer L04 for Planting Schedule  
\*\* Note: All underground services may not be shown. Refer to service offset and locations table (L01) and kerb markings before excavation commences.



KEY PLAN

- SERVICES NOTE:
- THE LOCATION OF UNDERGROUND SERVICES SHOWN ON THIS DRAWING ARE APPROXIMATE ONLY. ACTUAL SITE CONDITIONS MAY VARY.
  - THE EXACT POSITIONS OF SERVICES SHOULD BE ESTABLISHED ON SITE PRIOR TO ANY WORKS COMMENCING.
  - NO GUARANTEE CAN BE GIVEN THAT ALL EXISTING SERVICES ARE SHOWN ON THIS PLAN. CONTRACTOR SHOULD REFER TO ENGINEERING DRAWINGS AND/OR CONTACT RELEVANT AUTHORITIES FOR MORE DETAILED INFORMATION REGARDING EXACT SERVICE LOCATION AND BOUNDARY OFFSETS.



- GENERAL NOTES:
- ALL SETOUTS SHALL BE CHECKED AND APPROVED ON SITE BY THE SUPERINTENDENT PRIOR TO CONSTRUCTION.
  - ANY DISCREPANCIES SHALL BE IMMEDIATELY REPORTED TO THE SUPERINTENDENT, WHO SHALL ISSUE FURTHER INSTRUCTIONS.
  - DO NOT SCALE DRAWINGS. FIGURED DIMENSIONS SHALL HAVE PRECEDENCE OVER SCALED DIMENSIONS.
  - ALL SHOP DRAWINGS SHALL BE SUBMITTED TO THE SUPERINTENDENT FOR APPROVAL PRIOR TO FABRICATION.
  - MATERIAL CODES SHALL HAVE PRECEDENCE OVER HATCHES WHERE CODES ARE NOT SHOWN, REFER TO HATCH TYPE WHERE DISCREPANCIES OR OMITTED DATA OCCUR, REFER TO SUPERINTENDENT FOR DIRECTION.
  - ALL FABRICATED ITEMS SHALL BE INSPECTED AND APPROVED BY THE SUPERINTENDENT PRIOR TO INSTALLATION.
  - THE CONTRACTOR SHALL LOCATE ALL SUBSURFACE SERVICES ETC. PRIOR TO EXCAVATION AND PROTECT SAME DURING CONSTRUCTION.
  - SERVICES LOCATION SHOWN ARE INDICATIVE ONLY. LOCATE ALL SERVICES ON SITE PRIOR TO PLATING AND RELOCATE TREES TO 0.50M MIN. FROM SERVICES TO SUPERINTENDENT'S APPROVAL.
  - TREE LOCATIONS ARE TO BE CONFIRMED ON SITE BY COUNCIL PRIOR TO EXCAVATION AND INSTALLATION.

D	ISSUE FOR COUNCIL APPROVAL	BK	29.03.18
C	ISSUE FOR COUNCIL APPROVAL	BK	22.03.18
B	ISSUE FOR CLIENT APPROVAL	BK	15.03.18
A	PRELIMINARY	BK	07.03.18
REV.	DESCRIPTION	INT.	DATE

MDG Landscape Architects  
Level 3, 141 Flinders Lane  
Melbourne, Victoria 3000 Australia  
T: (03) 9650 6600  
E: mail@mdgla.com.au

SEAGROVE

STAGE 13

DRAWING TITLE  
STAGE 13 STREETSCAPE  
DETAILED PLANTING PLAN

DATE	SCALE
January 2018	1 : 100 @ A1
FILE PATH	
J:\Seagrove\6. Documentation\0244N Blue Tongue Common Park D0& Docs	
CHECKED	DRAWN
BM	BK
DRAWING NO.	REVISION
1347H L04	D