

**LEGEND**

PROPOSED DRAINAGE

EXISTING DRAINAGE

HOUSE CONNECTION

EXISTING HOUSE CONNECTION

RAIN GARDEN

PROPOSED SEWERAGE

EXISTING SEWERAGE

TEMPORARY SEWERAGE

WATER/NDW WATER/GAS/ELEC/NBN MAINS

EXISTING WATER/NDW WATER/GAS/ELEC/NBN MAINS

EXISTING FENCING

LOT RUNOFF DIRECTION

EXISTING BUILDING

VEGETATION TO RETAIN

TREE TO RETAIN

VEGETATION TO REMOVE

TREE TO REMOVE

BUILDING EXCLUSION ZONE

INTERSECTION TREATMENT

VEHICLE CROSSOVER

CUT/FILL AREA

NOTE: DRIVEWAYS TO BE CONSTRUCTED FOR LOTS 517, 553, 556, 560 & 562. DRIVEWAYS FOR LOTS NOT LISTED ARE TO BE COMPLETED AT TIME OF OCCUPANCY IN ACCORDANCE WITH TITLE RESTRICTIONS.

UNLESS SHOWN OTHERWISE ALL AREAS SHOWN ON THE DRAWINGS TO BE CUT OR FILLED ARE TO BE STRIPPED OF TOPSOIL TO A DEPTH OF 100mm. UPON COMPLETION OF THE BULK EARTHWORKS, THE TOPSOIL IS TO BE SPREAD TO A DEPTH OF 100mm OVER THE AREA & GRADED TO FINISHED LEVELS SHOWN ON THE DRAWINGS WITH A MINIMUM SLOPE OF 1 IN 150. ALL FILLING IS TO BE COMPACTED IN 150mm EQUAL LAYERS TO 95% OF AS1289.5.1.1 (STANDARD COMPACTION) & TEST RESULTS FORWARDED TO COUNCIL. REFER TO CUT AND FILL DETAIL ON SHEET 201 FOR AREAS OF FILL WORKS.

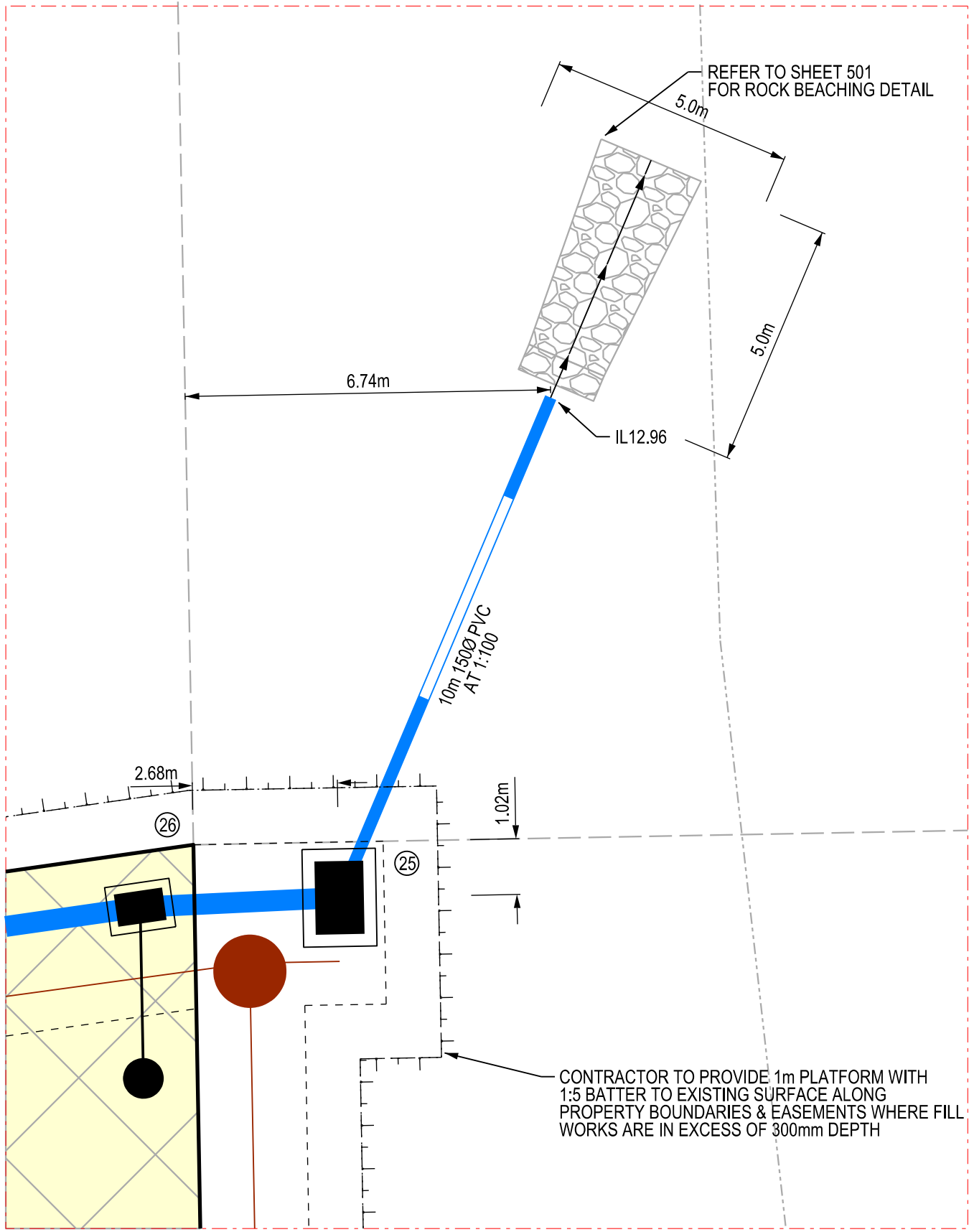
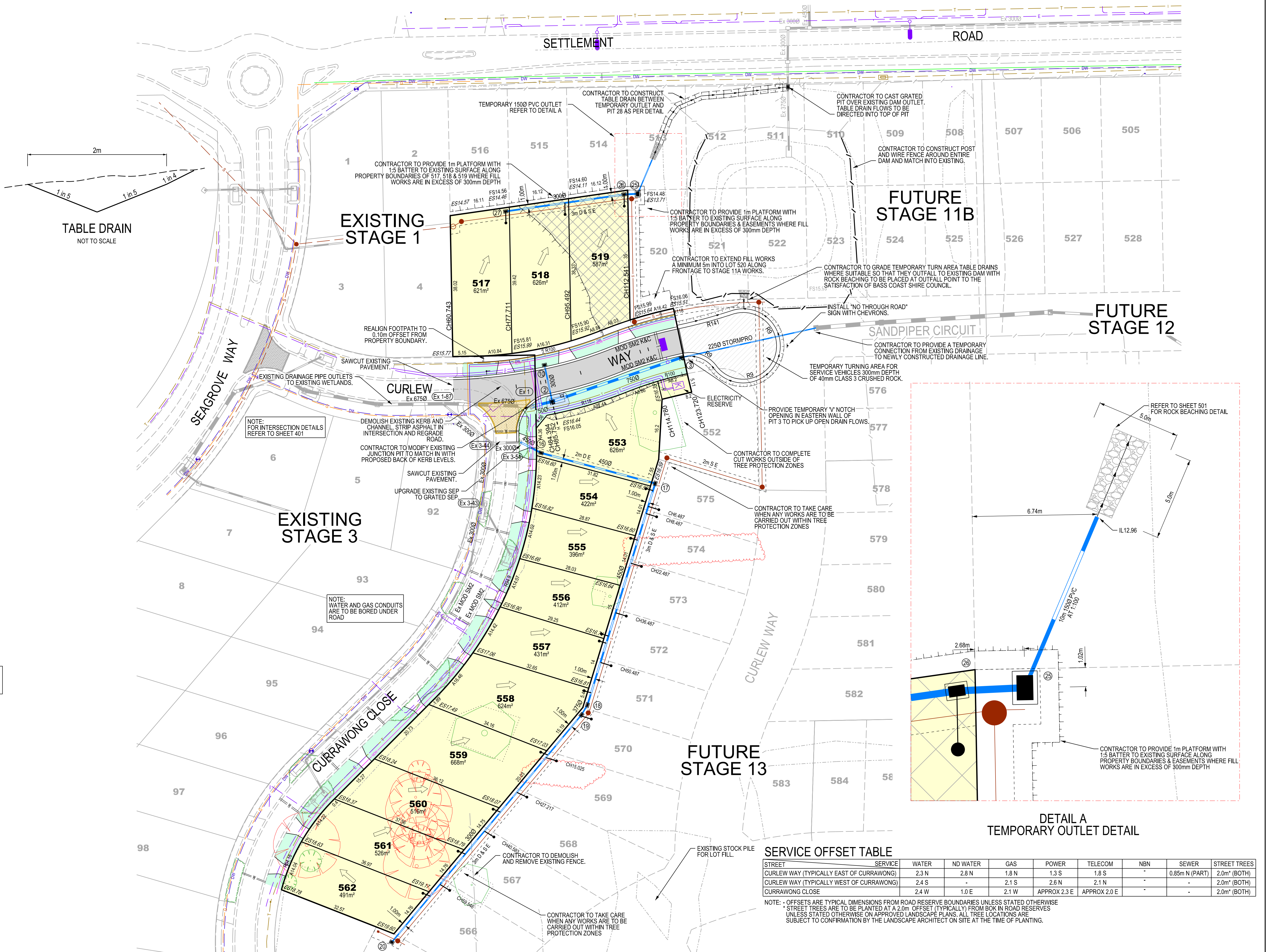
CONTRACTOR TO ENSURE THAT SERVICE CROSSINGS FOR CURRAWONG CLOSE ARE CLEAR OF EXISTING DRIVEWAYS AND GARDEN BEDS WHERE POSSIBLE. CONTRACTOR TO ENSURE NATURESTRIPS ARE REINSTATED TO THE SATISFACTION OF COUNCIL.

NOTE: ALL EXISTING VEGETATION MUST BE MAINTAINED UNLESS SPECIFIED OTHERWISE IN THE CONSTRUCTION MANAGEMENT PLAN.

AREAS OF FILLING WORKS WITHIN LOTS ARE TO BE SURVEYED ONCE COMPLETED AND FINISHED LEVELS TO BE SHOWN ON AS CONSTRUCTED PLANS.

NOTE: CONTRACTOR TO REFER SHEET 004 FOR REMOVAL OF EXISTING PITS & DRAINS

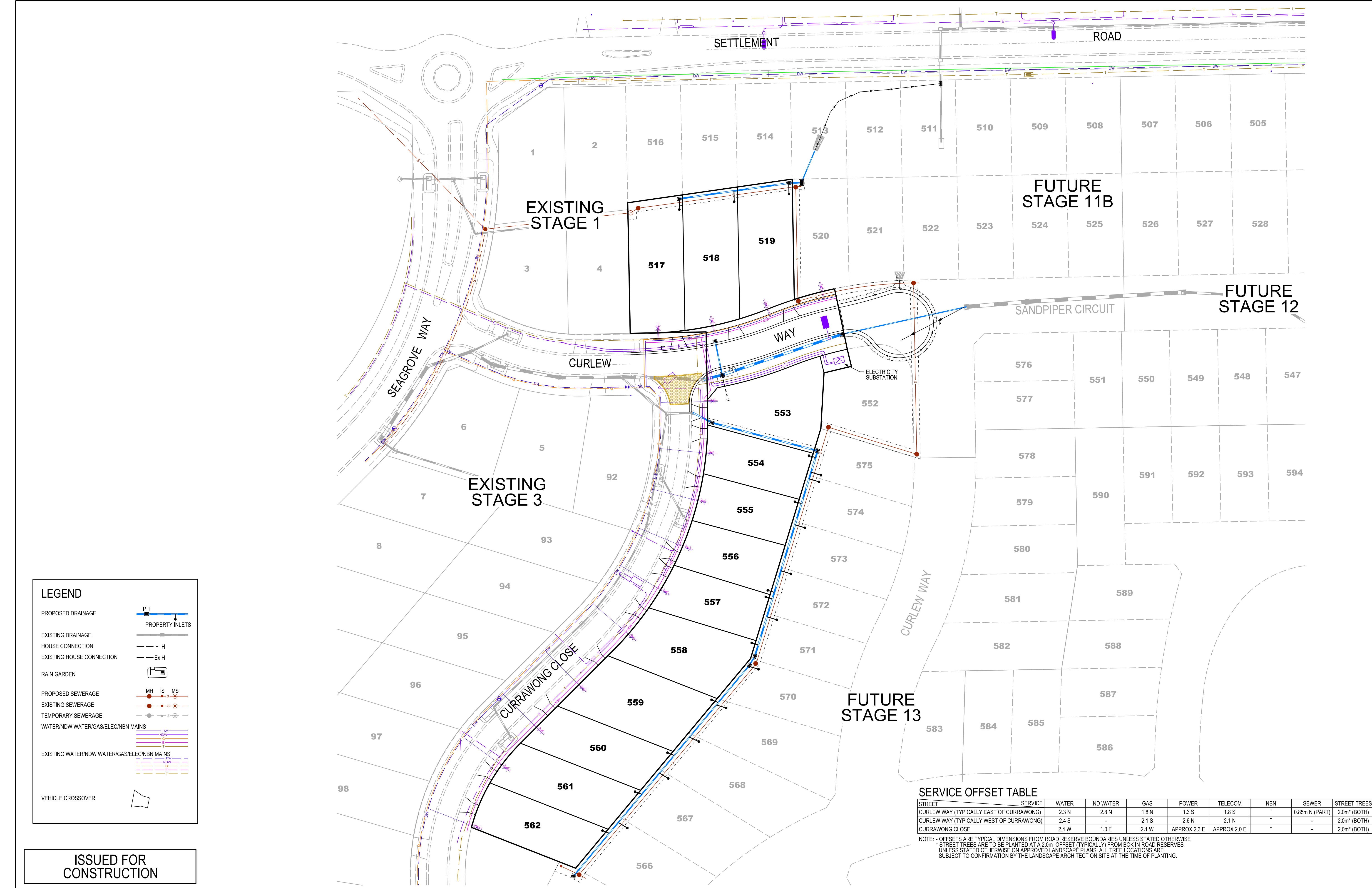
**ISSUED FOR CONSTRUCTION**



STREET		SERVICE	WATER	ND WATER	GAS	POWER	TELECOM	NBN	SEWER	STREET TREES
CURLEW WAY (TYPICALLY EAST OF CURRAWONG)		2.3 N	2.8 N	1.8 N	1.3 S	1.8 S	-	0.85m N (PART)	2.0m* (BOTH)	
CURLEW WAY (TYPICALLY WEST OF CURRAWONG)		2.4 S	-	2.1 S	2.6 N	2.1 N	-	-	2.0m* (BOTH)	
CURRAWONG CLOSE		2.4 W	1.0 E	2.1 W	APPROX 2.3 E	APPROX 2.0 E	-	-	2.0m* (BOTH)	

NOTE: - OFFSETS ARE TYPICAL DIMENSIONS FROM ROAD RESERVE BOUNDARIES UNLESS STATED OTHERWISE  
\* STREET TREES ARE TO BE PLANTED AT A 2.0m OFFSET (TYPICALLY) FROM BOK IN ROAD RESERVES  
UNLESS STATED OTHERWISE ON APPROVED LANDSCAPE PLANS. ALL TREE LOCATIONS ARE SUBJECT TO CONFIRMATION BY THE LANDSCAPE ARCHITECT ON SITE AT THE TIME OF PLANTING.





LEGEND

PROPOSED DRAINAGE

PROPERTY INLETS

EXISTING DRAINAGE

HOUSE CONNECTION

EXISTING HOUSE CONNECTION

RAIN GARDEN

PROPOSED SEWERAGE

EXISTING SEWERAGE

TEMPORARY SEWERAGE

WATER/NDW WATER/GAS/ELEC/NBN MAINS

EXISTING WATER/NDW WATER/GAS/ELEC/NBN MAINS

VEHICLE CROSSOVER

SERVICE OFFSET TABLE

STREET	SERVICE	WATER	ND WATER	GAS	POWER	TELECOM	NBN	SEWER	STREET TREES
CURLEW WAY (TYPICALLY EAST OF CURRAWONG)		2.3 N	2.8 N	1.8 N	1.3 S	1.8 S	-	0.85m N (PART)	2.0m* (BOTH)
CURLEW WAY (TYPICALLY WEST OF CURRAWONG)		2.4 S	-	2.1 S	2.6 N	2.1 N	-	-	2.0m* (BOTH)
CURRAWONG CLOSE		2.4 W	1.0 E	2.1 W	APPROX 2.3 E	APPROX 2.0 E	-	-	2.0m* (BOTH)

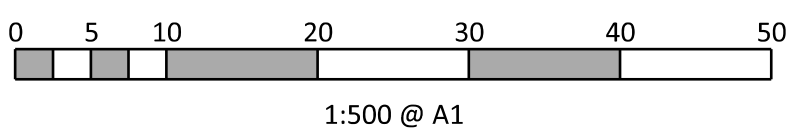
NOTE: - OFFSETS ARE TYPICAL DIMENSIONS FROM ROAD RESERVE BOUNDARIES UNLESS STATED OTHERWISE  
- STREET TREES ARE TO BE PLANTED AT A 2.0m OFFSET (TYPICALLY) FROM BOK IN ROAD RESERVES  
UNLESS STATED OTHERWISE ON APPROVED LANDSCAPE PLANS. ALL TREE LOCATIONS ARE  
SUBJECT TO CONFIRMATION BY THE LANDSCAPE ARCHITECT ON SITE AT THE TIME OF PLANTING.

ISSUED FOR  
CONSTRUCTION

© COPYRIGHT All rights reserved.  
Beveridge Williams & Co. Pty Ltd has granted a licence to the principal to use this document for its intended purpose.  
No unauthorised copying is permitted.

Rev	Description	Date	By	App
A	ISSUED FOR CONSTRUCTION	15.10.14	MJC	MJC

Rev	Description	Date	By	App
-----	-------------	------	----	-----



Designed Date	M.COYNE 25.08.14
Drawn	M.JONES
Approved Date	C.WHITE 25.08.14
PS Number	PS701111J
BW Ref	M4015-11A



**Beveridge Williams**  
development & environment consultants  
134 Graham Street  
Wonthaggi VIC 3995  
ph: 03 5672 1505  
www.beveridgewilliams.com.au



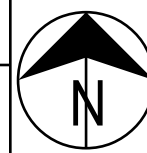
Project  
Details  
SEAGROVE ESTATE STAGE 11A, COWES  
SOUTHERN SUSTAINABLE DEVELOPMENTS  
BASS COAST SHIRE COUNCIL

Drawing  
Title  
SERVICE PLAN

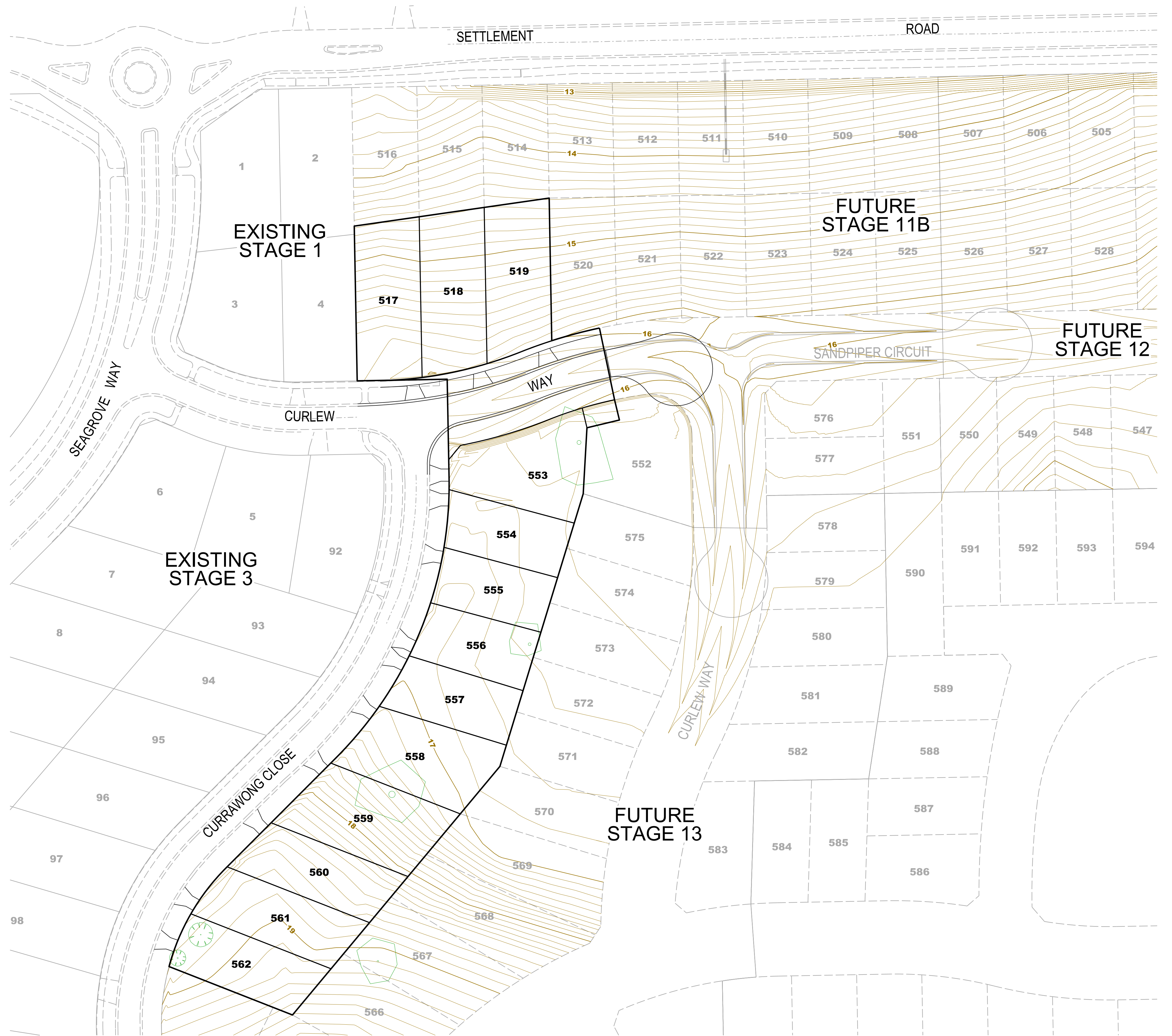
K:\v\Melbourne Files\M4015 - Seagrove  
Estate\Engineering\11-Stage\Design\Road  
& Drainage\M4015-11A-D.dgn

Scale  
1:500 @ A1

Council Ref	Stage No	Drawing No	Rev
2448	11A R 102	A	







**LEGEND**

VEGETATION TO RETAIN

TREE TO RETAIN

VEHICLE CROSSOVER

**ISSUED FOR CONSTRUCTION**

© COPYRIGHT All rights reserved. Beveridge Williams & Co. Pty Ltd has granted a licence to the principal to use this document for its intended purpose. No unauthorised copying is permitted.																																																	
A ISSUED FOR CONSTRUCTION										15.10.14 MJC MJC																																							
Rev	Description				Date	By	App	Rev	Description				Date	By	App																																		

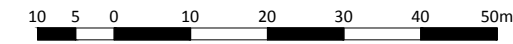




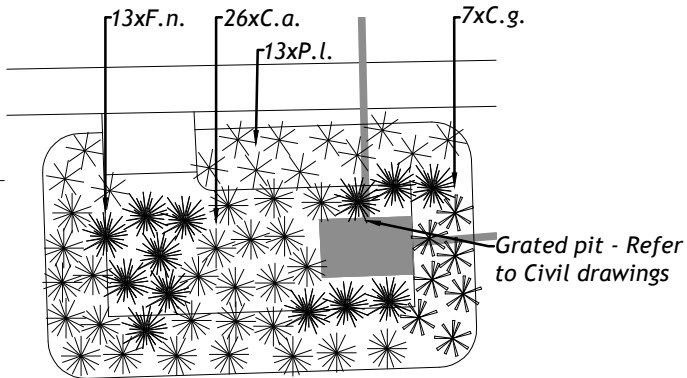
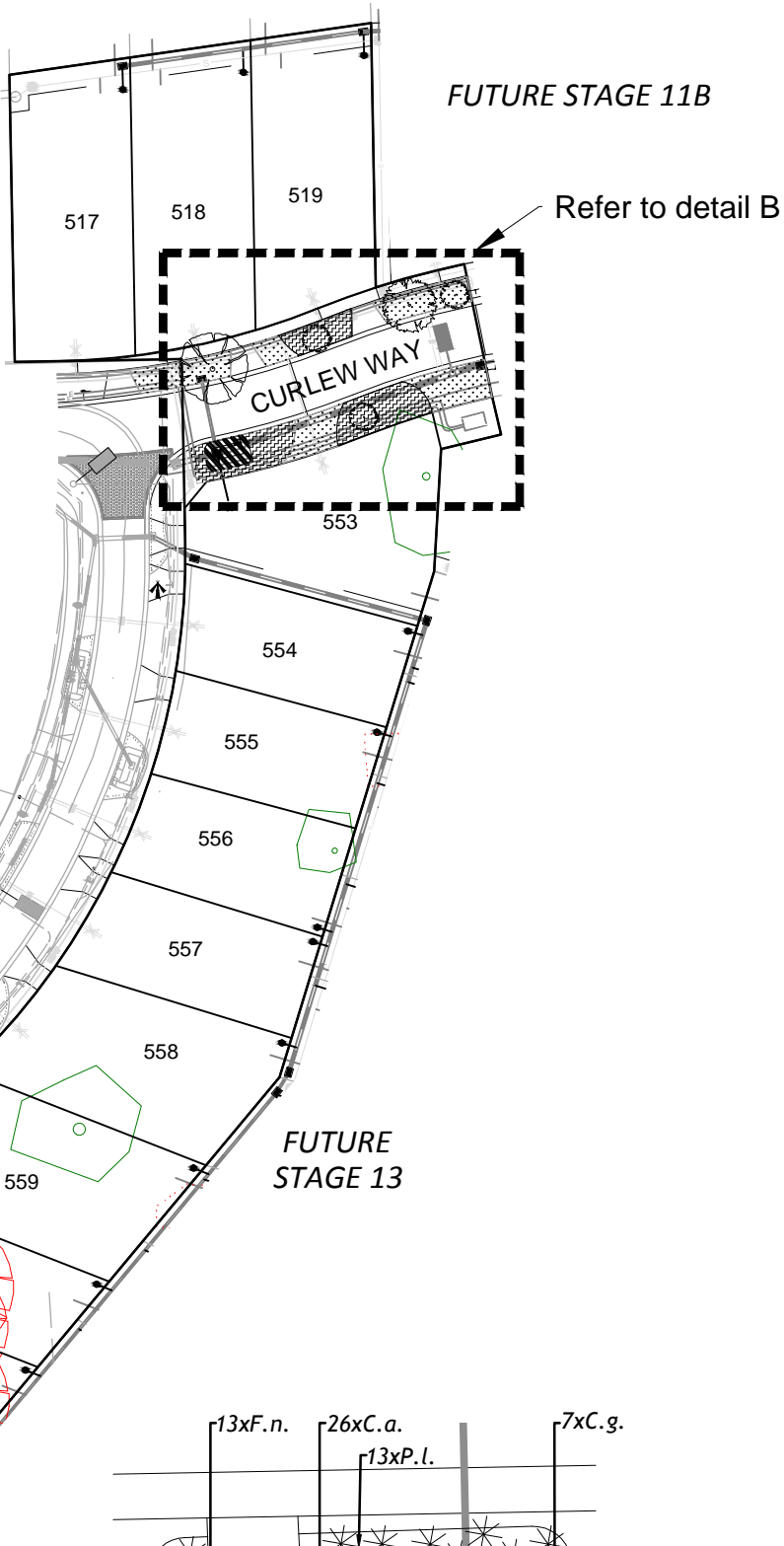
KEY PLAN (NOT TO SCALE)

EXISTING STAGE 3  
Currawong Close planting  
completed as part of stage 3

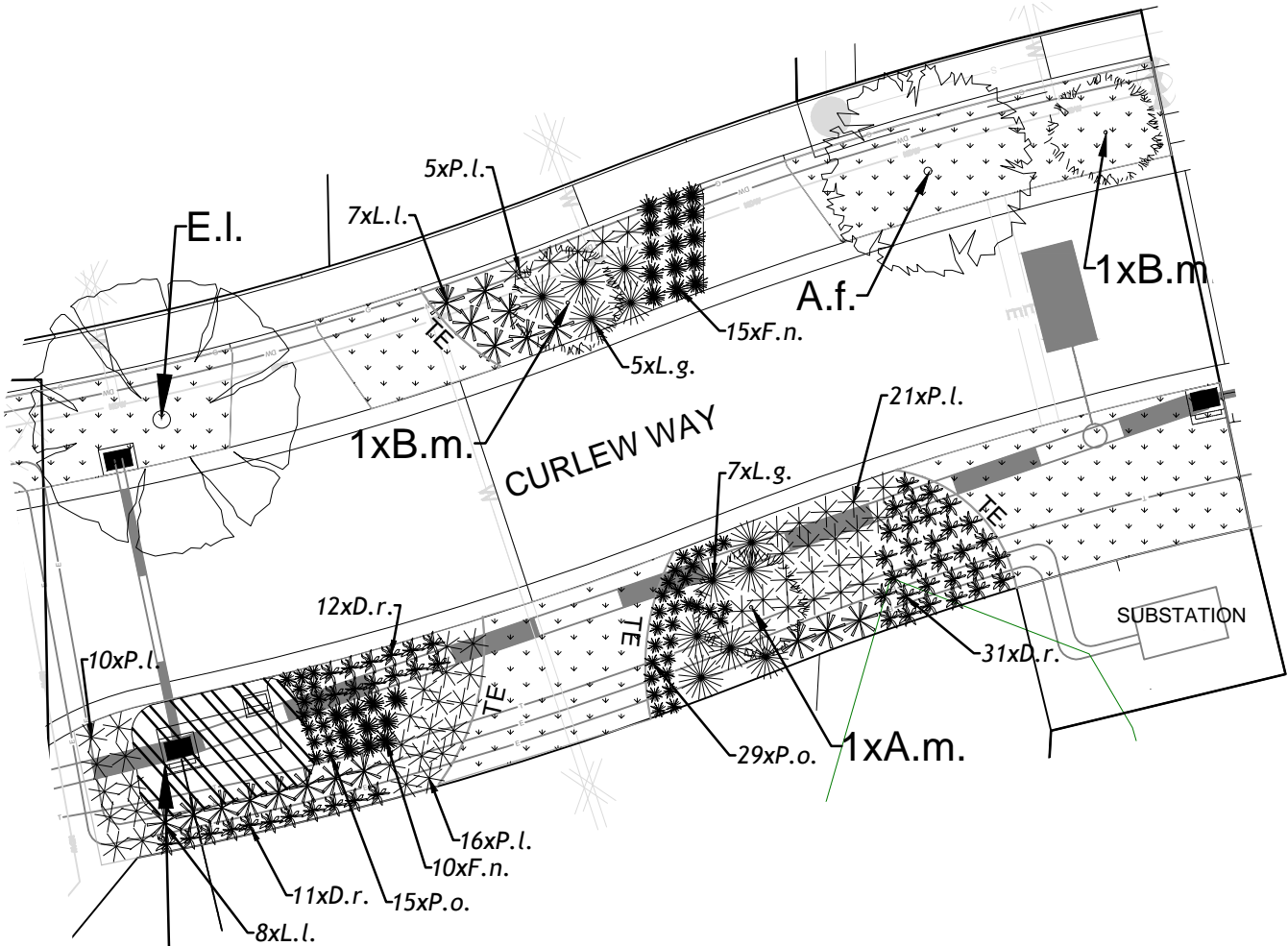
A STAGE 11a Plan  
SCALE 1:500



FOR COUNCIL APPROVAL



C TYPICAL RAINGARDEN PLANTING DETAIL  
SCALE 1:10 (A3) / 1:20(A1)



RAINGARDEN

Refer to typical raingarden planting  
Sheet 1, Detail C

B 1 DETAIL PLANTING PLAN  
SCALE 1:50 (A3) / 1:100(A1)

GENERAL NOTES

1. Refer to Landscape Specification by Beveridge Williams.
2. The Landscape Contractor must refer to civil engineering drawings for set out of roads and carpark and all infrastructure.
3. This plan is intended for soft landscaping and associated landscape materials and must not be used for any other purposes.
4. All survey information supplied is assumed to be correct.
5. The Landscape Contractor must verify all dimensions and areas prior to commencing any work or placing any orders for materials.
6. The Landscape Contractor must determine the location of all underground services prior to commencing any work on site and shall be liable for any damage to services or conduits.
7. The Landscape Contractor must immediately report any perceived errors or omissions in the landscape drawings to the Project Manager and Client.
8. Where any conflict occurs between proposed tree locations and infrastructure, such as light poles or powerlines, tree(s) must be relocated or removed.
9. The Landscape Contractor must confirm all plant quantities prior to ordering.
10. Grassed nature strips as specified.
11. Refer to Sheet 2 - LANDSCAPE DETAILS - for Establishment & Maintenance Notes

LEGEND

- EXISTING TREE TO BE RETAINED & PROTECTED
- EXISTING TREE TO BE REMOVED
- PROPOSED TREES & SHRUBS
- TERRESTRIAL PLANTING (SHREDDED EUCAMULCH)
- RAINGARDEN PLANTING IN 'TARRAWINGEE PEBBLES' GRAVEL MULCH (Ephemeral zone) Refer Detail A, Sheet 1
- GRASS (SEEDED)
- DRAINAGE
- SERVICES
- ELECTRICITY / STREET LIGHTS
- TIMBER EDGE Refer Detail C, Sheet 2

PLANT SCHEDULE						
CODE	BOTANICAL NAME	COMMON NAME	HEIGHT X WIDTH	% MIX & DENSITY	POT SIZE	QTY
Street Trees						
A.f.	Agonis flexuosa	Willow Myrtle	7-9x4-5m	-	400mm	1
A.m.	Acacia melanoxylon	Blackwood	12-16x5-7m	-	45L	1
B.m.	Banksia marginata	Sliver Banksia	2x1.8m	-	400mm	2
E.l.	Eucalyptus leucoxylon 'Eukie Dwarf'	Dwarf Yellow Gum	9-10x7-9m	-	400mm	1
Terrestrial Planting (Street planting) - Tussocks & groundcovers						
D.r.	Dianella revoluta var brevicaulis	Black-anther Flax Lily	0.8x0.8m	-	Tube	54
F.n.	Ficinia nodosa	Knobby Club-Rush	1x0.8m	-	Tube	25
L.g.	Lepidosperma gladiatum	Coast Sword Sedge	1x1.5m	-	Tube	12
P.o.	Patersonia occidentalis	Purple Flag	0.3x0.5m	-	Tube	44
P.l.	Poa labillardieri	Common Tussock Grass	1x1m	-	Tube	52
L.l.	Lomandra Tanika	Spiny Headed Mat Rush	1x1.2m	-	Tube	15
Ephemeral Raingarden						
C.a.	Carex appressa	Tall Sedge	0.8X0.7m	22% @ 4/m²	Tube	26
C.g.	Carex gaudichaudiana	Fen Sedge	0.8X0.5m	22% @ 4/m²	Tube	7
F.n.	Ficinia nodosa	Nobby Club Rush	1x0.8m	44% @ 4/m²	Tube	13
P.l.	Poa labillardieri	Common Tussock - Grass	0.8X0.8m	12% @ 4/m²	Tube	13